



**Guide Price**  
**£500,000**

**Freehold**

2x  1x  1x 

**Bower Lane, Eynsford,  
Kent, DA4**

**OVER 60?**

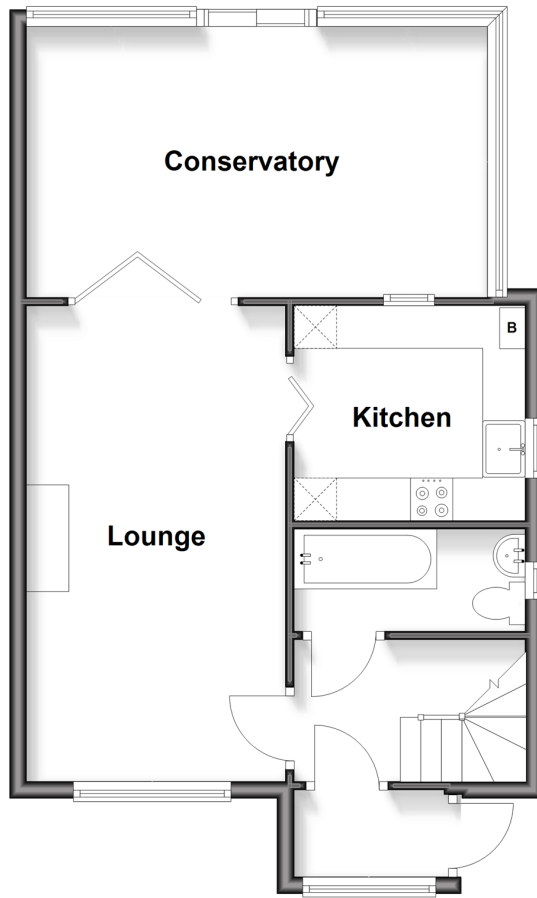
Secure this property  
for up to **59% less!**

*Wards*  
Helping you move forwards



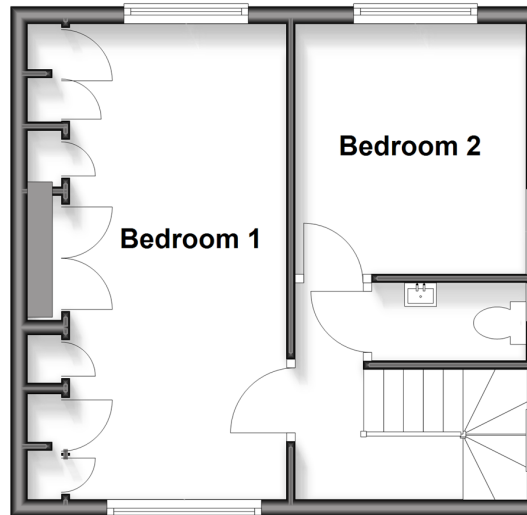
## Ground Floor

Approx. 52.5 sq. metres (565.3 sq. feet)



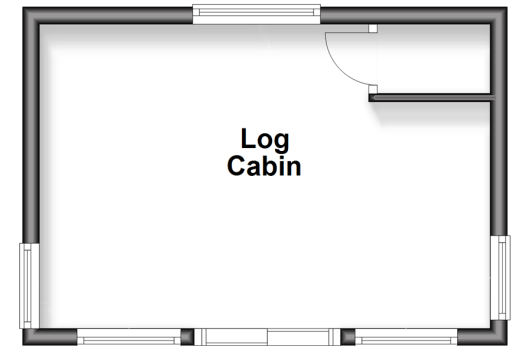
## First Floor

Approx. 32.8 sq. metres (352.8 sq. feet)



## Outbuilding

Approx. 19.0 sq. metres (204.4 sq. feet)



## Accommodation

### GROUND FLOOR

Porch  
Hallway: 6'6 x 4'11 (1.98m x 1.50m)  
Lounge: 18'1 x 10'1 (5.52m x 3.08m)  
Kitchen: 8'11 x 8'3 (2.72m x 2.52m)  
Bathroom: 8'10 x 3'11 (2.69m x 1.19m)  
Conservatory: 17'2 x 9'9 (5.24m x 2.97m)

### FIRST FLOOR

Landing  
Bedroom 1: 18'5 x 8'4 up to fitted wardrobes (5.62m x 2.54m)  
Bedroom 2: 10'4 x 9'2 (3.15m x 2.80m)  
WC: 6'1 x 2'8 (1.86m x 0.81m)

### OUTBUILDING

Log Cabin: 17'7 x 11'7 (5.36m x 3.53m)

### OUTSIDE

Front Garden  
Rear Garden



## Main features

- Immaculately presented throughout with stunning views
- Log Cabin
- Eynsford train station conveniently located 0.6 miles away
- Conservatory
- Eynsford Castle and Lullingstone Castle Country Park nearby



### Nearest Schools

Primary Schools: The Anthony Roper Primary 0.3 miles, St Bartholomew's Catholic Primary, Swanley 2.8 miles, St Pauls' C of E Voluntary Controlled Primary 2.9 miles



### Transport Information

Train Stations: Eynsford 0.8 miles, Shoreham 3.1 miles, Farningham Road 3.1 miles



### Address

Bower Lane, Eynsford, Kent, DA4



### Directions

For directions to this property please contact us.





Call Eynsford Branch 01322 862844 ■ [wardsofkent.co.uk](http://wardsofkent.co.uk)



- Legal advice should be taken to verify fixtures/fittings, planning, alterations and/or lease details
- Appliances & services are untested, dimensions are approximate and floor plans are not to scale
- Through a Homewise Home For Life Plan people aged 60+ can secure this property for up to 50% less, by purchasing a Lifetime Lease.



12518357/20251020/MC/MF