



Price
£425,000

Freehold

2x  1x  1x 

**Church Walk, Eynsford,
Dartford, Kent, DA4**

OVER 60?

Secure this property
for up to **59% less!**

Wards
Helping you move forwards



Main features

- Off road parking for 2 cars
- Short walk to Eynsford Station
- Large extended house
- Private, low maintenance garden offering the perfect place to unwind
- Perfect village location with tranquil countryside walks

Accommodation

GROUND FLOOR

- Hallway
- Lounge: 16'6 x 16'5 (5.03m x 5.01m)
- Kitchen: 11'2 x 9'4 (3.41m x 2.85m)
- Lean-to: 25'9 x 6'11 (7.85m x 2.11m)

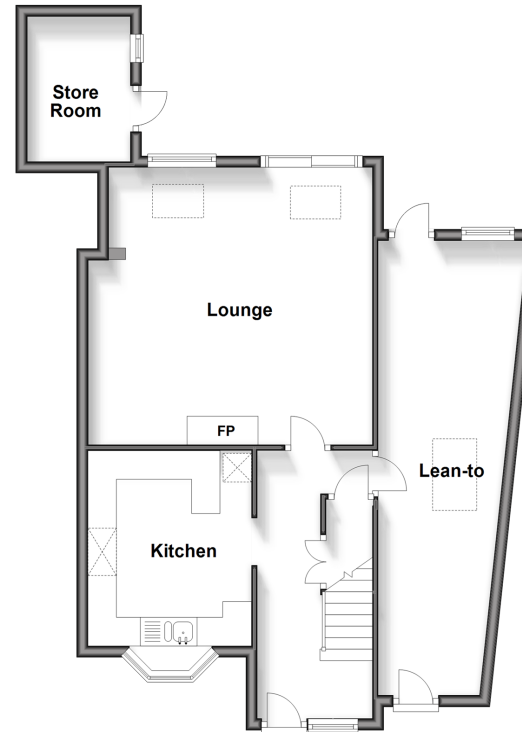
FIRST FLOOR

- Landing
- Bedroom 1: 14'1 x 9'3 (4.30m x 2.82m)
- Bedroom 2: 10'2 x 6'11 (3.10m x 2.11m)
- Shower Room: 9'2 x 5'7 (2.80m x 1.70m)

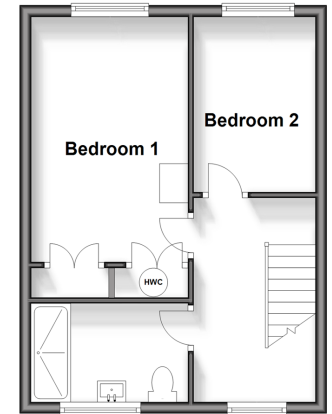
OUTSIDE

- Driveway
- Rear Garden
- Store Room: 8'3 x 6'0 (2.52m x 1.83m)

Ground Floor
Approx. 67.0 sq. metres (721.0 sq. feet)



First Floor
Approx. 33.7 sq. metres (363.2 sq. feet)



Call Eynsford - 01322 862844 ■ wardsofkent.co.uk

■ Legal advice should be taken to verify fixtures/fittings, planning, alterations and/or lease details
 ■ Through a Homewise Home For Life Plan people aged 60+ can secure this property for up to 59% less, by purchasing a Lifetime Lease.

■ Appliances & services are untested, dimensions are approximate and floor plans are not to scale



12519854/20240713/SJ/LP