



Price
£400,000

Freehold

3x  1x  2x 

**Saddlers Park, Eynsford,
Kent, DA4**

OVER 60?

Secure this property
for up to **59% less!**

Wards
Helping you move forwards



Main features

- Semi-detached house
- Large rear garden
- No onward chain
- Very close proximity to central Eynsford with easy walk to station
- Short drive to motorway network and main high street shopping

Accommodation

GROUND FLOOR

Entrance Hall

Lounge: 12'4 x 11'11 (3.76m x 3.63m)

Dining Area: 10'8 x 9'2 (3.25m x 2.80m)

Kitchen: 8'0 x 7'5 (2.44m x 2.26m)

Sun Room: 17'2 x 8'6 (5.24m x 2.59m)

FIRST FLOOR

Landing

Bedroom 1: 11'0 x 10'8 (3.36m x 3.25m)

Bedroom 2: 11'3 x 9'9 (3.43m x 2.97m)

Bedroom 3: 8'9 x 7'6 (2.67m x 2.29m)

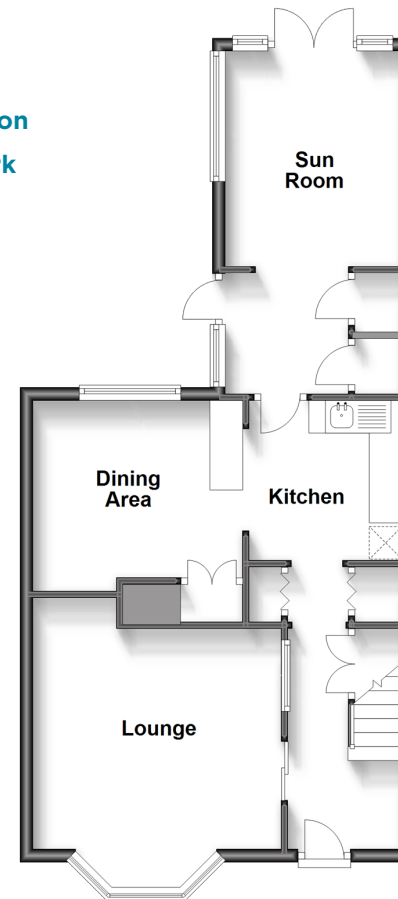
Bathroom: 5'5 x 5'4 (1.65m x 1.63m)

OUTSIDE

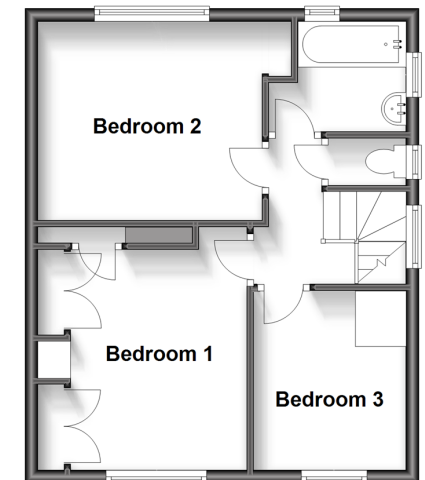
Front Garden

Large Rear Garden

Ground Floor
Approx. 53.3 sq. metres (573.6 sq. feet)



First Floor
Approx. 38.6 sq. metres (415.7 sq. feet)



Call Eynsford - 01322 862844 ■ wardsof Kent.co.uk

- Legal advice should be taken to verify fixtures/fittings, planning, alterations and/or lease details
- Appliances & services are untested, dimensions are approximate and floor plans are not to scale
- Through a Homewise Home For Life Plan people aged 60+ can secure this property for up to 59% less, by purchasing a Lifetime Lease.



12520002/20240306/SJ/SJ