



**Price**  
**£375,000**

**Freehold**

2x  1x  1x 

**Beesfield Lane,  
Farningham, Dartford,  
Kent, DA4**

**OVER 60?**

Secure this property  
for up to **59% less!**

*Wards*  
Helping you move forwards



## Main features

- Large garden perfect for entertaining
- Spacious conservatory offering additional reception space
- Fantastic local commuting links
- Beautiful village location with countryside walks
- Great local schools including Anthony Roper

## Accommodation

### GROUND FLOOR

Hallway

Lounge: 10'9 x 10'1 (3.28m x 3.08m)

Dining Area: 10'6 x 7'2 (3.20m x 2.19m)

Kitchen: 9'11 x 8'5 (3.02m x 2.57m)

Conservatory: 13'2 x 6'9 (4.02m x 2.06m)

### FIRST FLOOR

Landing

Bedroom 1: 17'0 x 9'6 (5.19m x 2.90m)

Bedroom 2: 11'5 x 9'3 (3.48m x 2.82m)

Bathroom: 6'4 x 5'6 (1.93m x 1.68m)

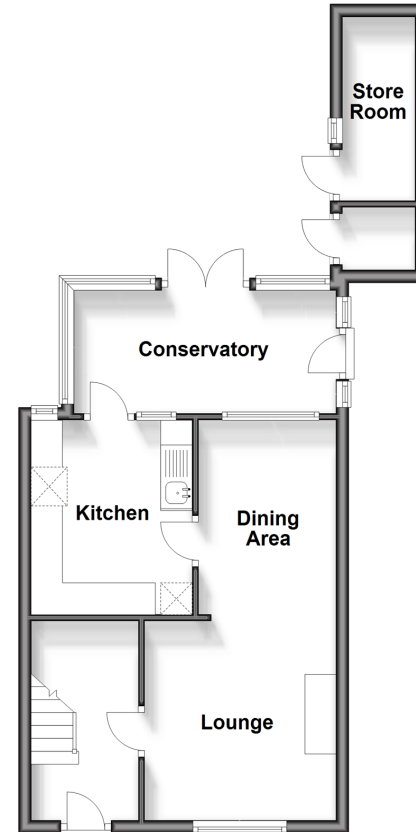
### OUTSIDE

Front Garden

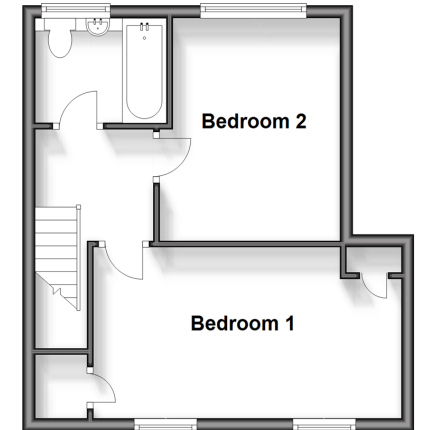
Rear Garden

Store Room

**Ground Floor**  
Approx. 43.7 sq. metres (470.1 sq. feet)



**First Floor**  
Approx. 33.2 sq. metres (357.1 sq. feet)



**Call Eynsford - 01322 862844 ■ [wardsof Kent.co.uk](http://wardsof Kent.co.uk)**

- Legal advice should be taken to verify fixtures/fittings, planning, alterations and/or lease details
- Appliances & services are untested, dimensions are approximate and floor plans are not to scale
- Through a Homewise Home For Life Plan people aged 60+ can secure this property for up to 59% less, by purchasing a Lifetime Lease.



12519978/20240413/MC/LP