



**OVER 60?**

Secure this property  
for up to **59% less!**

**Guide Price**  
**£230,000**

**Freehold**

2x  2x  1x 

**Regan Mews, Old**  
**Folkestone Road, Dover,**  
**Kent, CT17**

*Wards*  
Helping you move forwards





## Main features

- Sought after location of Aycliffe
- Large kitchen with integrated appliances
- Downstairs cloakroom, family bathroom and en-suite shower room
- Close to shops and easy access to Dover town
- No onward chain complications

## Accommodation

### GROUND FLOOR

Entrance Hall  
Downstairs Cloakroom  
Kitchen Area : 15'4 x 9'3 (4.68m x 2.82m)  
Lounge/Diner : 16'8 x 12'9 (5.08m x 3.89m)

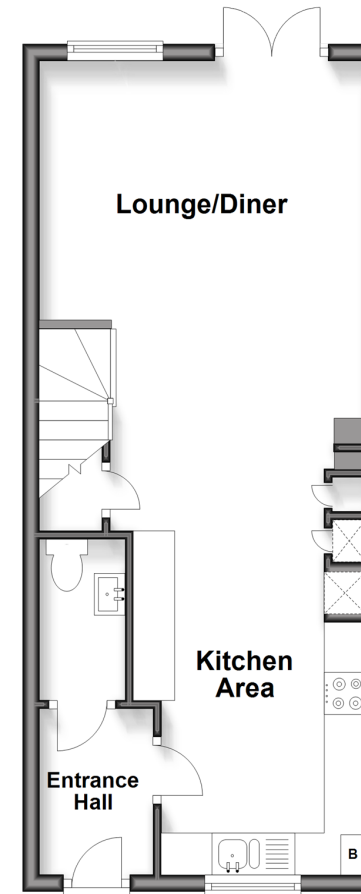
### FIRST FLOOR

Landing  
Bedroom 1 : 13'0 x 10'7 (3.97m x 3.23m)  
En-Suite Shower Room: 6'4 x 5'6 (1.93m x 1.68m)  
Bathroom : 6'7 x 6'4 (2.01m x 1.93m)  
Bedroom 2 : 13'1 x 7'8 (3.99m x 2.34m)

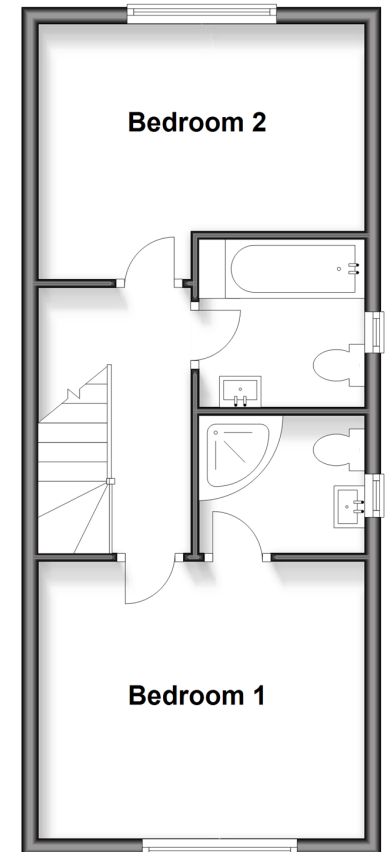
### OUTSIDE

Front Garden  
Rear Garden  
Garden Shed  
Allocated Parking

**Ground Floor**  
Approx. 38.2 sq. metres (411.7 sq. feet)



**First Floor**  
Approx. 38.2 sq. metres (411.7 sq. feet)



**Call Dover - 01304 214876 ■ [wardsof Kent.co.uk](http://wardsof Kent.co.uk)**

- Legal advice should be taken to verify fixtures/fittings, planning, alterations and/or lease details
- Appliances & services are untested, dimensions are approximate and floor plans are not to scale
- Through a Homewise Home For Life Plan people aged 60+ can secure this property for up to 59% less, by purchasing a Lifetime Lease



10736300/20260112/GM/OV