



Guide Price
£285,000

Freehold

3x  2x  1x 

**Goldcrest Row,
Whitfield, Dover, Kent,
CT16**

Wards
Helping you move forwards



Main features

- Modern home in Richmond Park, Whitfield with an NHBC guarantee
- Sleek kitchen/diner features high-quality integrated appliances
- Spacious main bedroom includes a luxurious en-suite shower room
- Easy access to the A2 as well as A256
- One allocated parking space

Accommodation

GROUND FLOOR

Entrance Hallway
Downstairs Cloakroom
Kitchen: 14'9 x 9'9 (4.50m x 2.97m)
Lounge : 12'6 x 11'7 (3.81m x 3.53m)

FIRST FLOOR

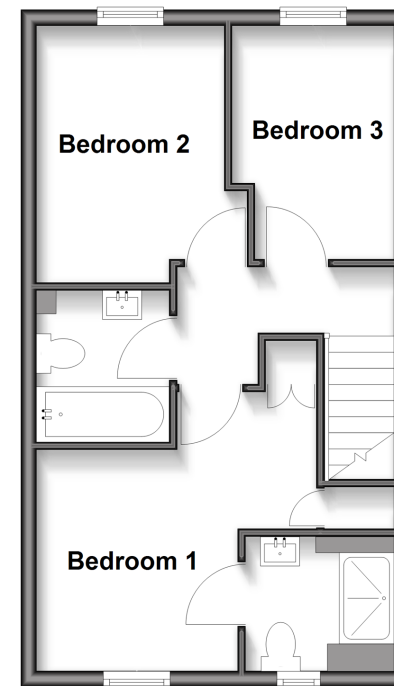
Landing
Bedroom 3 : 9'5 x 6'9 (2.87m x 2.06m)
Bedroom 2 : 9'3 x 7'8 (2.82m x 2.34m)
Bathroom : 6'3 x 5'3 (1.91m x 1.60m)
Bedroom 1 : 11'7 x 11'5 (3.53m x 3.48m)
En-Suite Shower Room

OUTSIDE

Front Garden
Rear Garden
Garden Shed
Allocated Parking Space

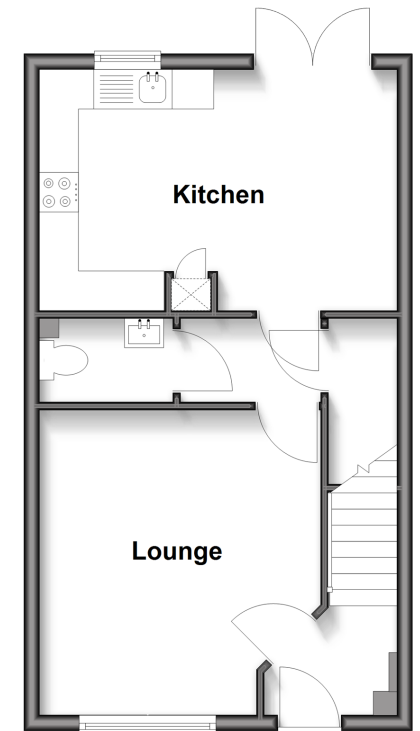
First Floor

Approx. 37.3 sq. metres (401.9 sq. feet)



Ground Floor

Approx. 37.5 sq. metres (403.4 sq. feet)



Call Dover - 01304 214876 ■ wardsofkent.co.uk

- Legal advice should be taken to verify fixtures/fittings, planning, alterations and/or lease details
- Appliances & services are untested, dimensions are approximate and floor plans are not to scale



10736232/20251028/GM/OV