



**Guide Price**  
**£175,000**

**Freehold**

2x  1x  1x 

**Glenfield Road, Dover,  
Kent, CT16**

**OVER 60?**

Secure this property  
for up to **59% less!**

*Wards*  
Helping you move forwards





## Main features

- Wonderful first time buy or buy to let investment
- Extended home, ideal for a growing family
- Large rear garden
- Property being sold with no onward chain
- Close to a variety of schools and amenities

## Accommodation

### GROUND FLOOR

Entrance Lobby

Lounge : 12'3 x 8'10 (3.74m x 2.69m)

Dining Area : 12'3 x 8'11 (3.74m x 2.72m)

Kitchen : 12'4 x 8'10 (3.76m x 2.69m)

### SPLIT LEVEL FIRST FLOOR

Landing

Family Bathroom

Bedroom 1 : 12'4 x 8'10 (3.76m x 2.69m)

Bedroom 2 : 9'4 x 9'2 (2.85m x 2.80m)

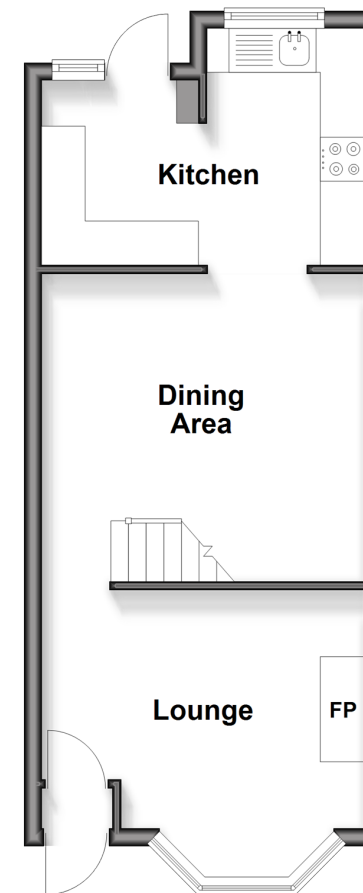
### OUTSIDE

Front Garden

Rear Garden

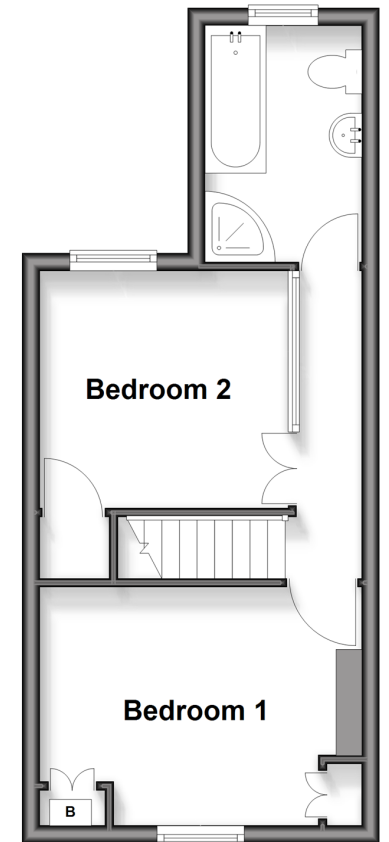
### Ground Floor

Approx. 32.8 sq. metres (353.2 sq. feet)



### Split Level First Floor

Approx. 28.4 sq. metres (305.4 sq. feet)



**Call Dover - 01304 214876 ■ [wardsof Kent.co.uk](http://wardsof Kent.co.uk)**

- The seller is a person connected with Wards as defined in the Estate Agents Act 1979
- Legal advice should be taken to verify fixtures/fittings, planning, alterations and/or lease details
- Appliances & services are untested, dimensions are approximate and floor plans are not to scale
- Through a Homewise Home For Life Plan people aged 60+ can secure this property for up to 50% less, by purchasing a Lifetime Lease.



10736248/20251112/GH/GM