



OVER 60?

Secure this property
for up to **59% less!**

Guide Price

£300,000

Freehold

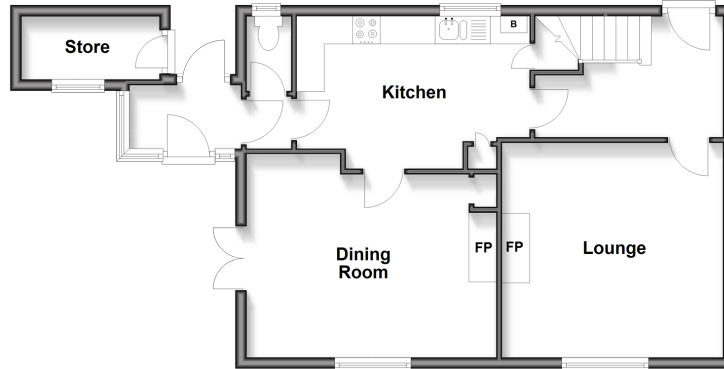
4x  1x  2x 

**Roosevelt Road, Dover,
Kent, CT16**

Wards
Helping you move forwards

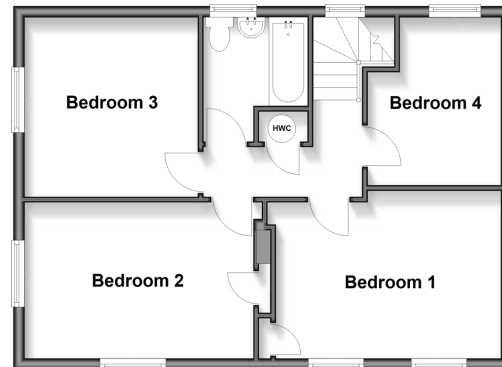
Ground Floor

Approx. 58.5 sq. metres (630.2 sq. feet)



First Floor

Approx. 53.2 sq. metres (572.7 sq. feet)



Outbuilding

Approx. 13.0 sq. metres (140.4 sq. feet)



Accommodation

GROUND FLOOR

Entrance Lobby

Downstairs Toilet

Lounge : 13'1 x 12'9 (3.99m x 3.89m)

Dining Room : 14'10 x 12'7 (4.52m x 3.84m)

Kitchen : 13'9 x 8'9 (4.19m x 2.67m)

Rear Lobby

FIRST FLOOR

Landing

Bathroom

Bedroom 1 : 15'6 x 9'5 (4.73m x 2.87m)

Bedroom 2 : 13'10 x 9'5 (4.22m x 2.87m)

Bedroom 3 : 10'8 x 10'4 (3.25m x 3.15m)

Bedroom 4 : 10'1 x 8'2 (3.08m x 2.49m)

OUTBUILDING

Garage

OUTSIDE

Front Garden

Rear Garden

Garden Sheds

Off Road Parking



Main features

- Large home set in a sought-after location
- Garage and off-road parking, perfect for when the guests descend
- Large garden
- Perfect property for a growing family
- Great size lounge & dining room, perfect for entertaining



Nearest Schools

Primary Schools: Green Park Community Primary 0.2 miles, Barton Junior School 0.8 miles, Charlton C of E Primary 0.9 miles
Secondary Schools: Dover Grammar School for Girls 1.0 miles, St Edmund's Catholic School 1.1 miles.



Transport Information

Train Stations: Kearsney 1.2 miles, Dover Priory 2.0 miles, Walmer 5.6 miles



Address

Roosevelt Road, Dover, Kent, CT16



Directions

For directions to this property please contact us.



Wards
Helping you move forwards

Call Dover Branch 01304 214876 ■ wardsofkent.co.uk



■ Legal advice should be taken to verify fixtures/fittings, planning, alterations and/or lease details ■ Appliances & services are untested, dimensions are approximate and floor plans are not to scale
■ Through a Homewise Home For Life Plan people aged 60+ can secure this property for up to 50% less, by purchasing a Lifetime Lease.



10735861/20251117/TE/GM