



Guide Price
£260,000

Freehold

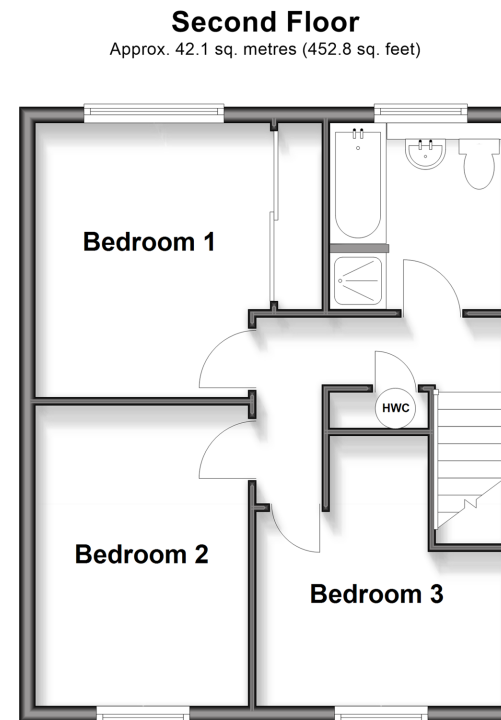
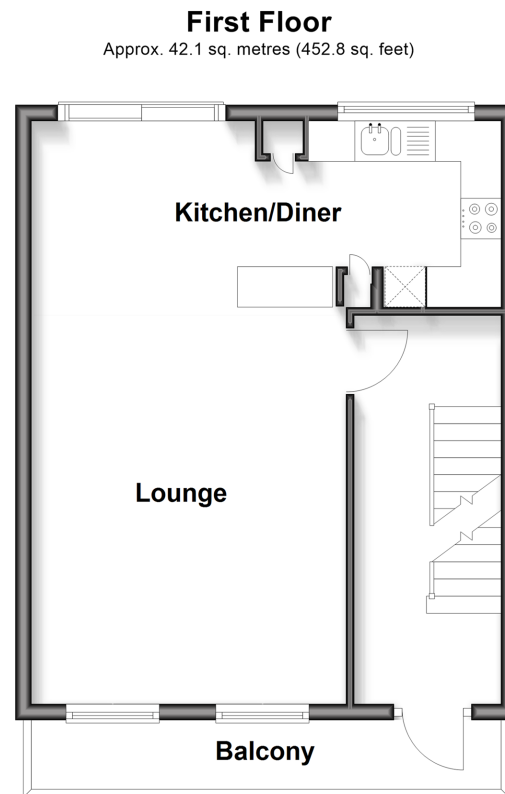
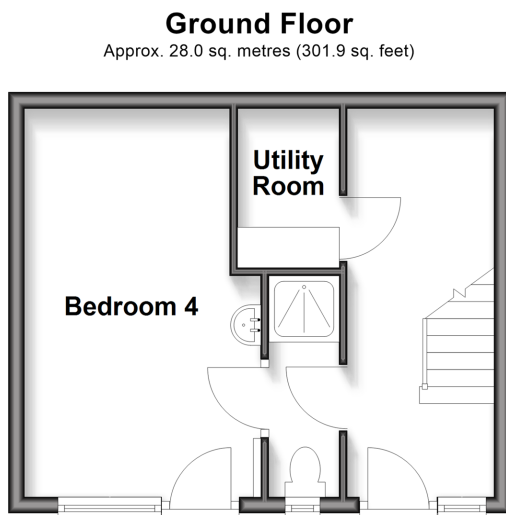
4x  2x  1x 

**Edred Road, Dover,
Kent, CT17**

OVER 60?

Secure this property
for up to **59% less!**

Wards
Helping you move forwards



Accommodation

GROUND FLOOR

Entrance Hall
Shower Room : 8'9 x 2'8 (2.67m x 0.81m)
Bedroom 4: 15'7 x 9'6 (4.75m x 2.90m)
Utility Room

FIRST FLOOR

Landing
Lounge : 16'4 x 13'5 (4.98m x 4.09m)
Kitchen/Diner : 19'3 x 7'4 (5.87m x 2.24m)

SECOND FLOOR

Landing
Bathroom: 7'5 x 7'1 (2.26m x 2.16m)
Bedroom 1: 11'7 x 11'7 (3.53m x 3.53m)
Bedroom 2: 9'1 x 8'7 (2.77m x 2.62m)
Bedroom 3: 12'9 x 8'8 (3.89m x 2.64m)

OUTSIDE

Paved Driveway
Rear Garden
Shed



Main features

- End of terrace house set over three floors, ideal for a growing family
- Sought after residential area of Tower Hamlets
- Off-street parking
- Balcony and also a tiered rear garden
- Close to schools, shops and Dover Priory railway station



Nearest Schools

Primary Schools: Priory Fields School 0.4 miles, Charlton C of E Primary 0.7 miles, Dover, St Mary's C of E Primary 0.7 miles
Secondary Schools: Dover Grammar School for Boys 0.6 miles, Dover Grammar School for Girls 0.8 miles.



Transport Information

Train Stations: Dover Priory 1.4 miles, Kearsney 2.3 miles, Martin Mill 4.7 miles



Address

Edred Road, Dover, Kent, CT17



Directions

For directions to this property please contact us.



Wards
Helping you move forwards

Call Dover Branch 01304 214876 ■ wardsofkent.co.uk



- Legal advice should be taken to verify fixtures/fittings, planning, alterations and/or lease details
- Appliances & services are untested, dimensions are approximate and floor plans are not to scale
- Through a Homewise Home For Life Plan people aged 60+ can secure this property for up to 50% less, by purchasing a Lifetime Lease.



10736205/20251114/TE/OV