



Guide Price
£325,000

Freehold

3x  1x  1x 

**Cranleigh Drive,
Whitfield, Dover, Kent,
CT16**

OVER 60?

Secure this property
for up to **59% less!**

Wards
Helping you move forwards



Main features

- Popular Whitfield location with garage & off road parking
- Extended large lounge, perfect for family living
- All bedrooms are a generous size
- Modern kitchen/breakfast room
- Quiet village location near schools and shops

Accommodation

GROUND FLOOR

Entrance Porch
Entrance Hall
Downstairs Toilet
Lounge : 24'9 x 13'8 (7.55m x 4.17m)
Dining Area : 11'8 x 8'8 (3.56m x 2.64m)
Kitchen : 14'2 x 8'1 (4.32m x 2.47m)

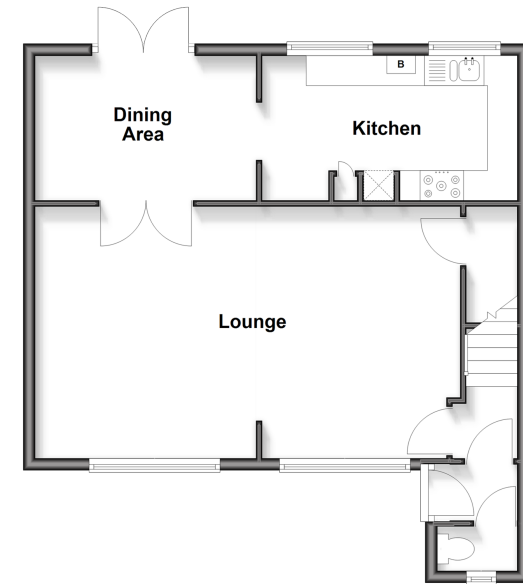
FIRST FLOOR

Landing
Bathroom : 14'9 x 7'6 (4.50m x 2.29m)
Bedroom 1 : 11'5 x 11'1 (3.48m x 3.38m)
Bedroom 2 : 12'1 x 11'2 (3.69m x 3.41m)
Bedroom 3 : 12'1 x 10'7 (3.69m x 3.23m)

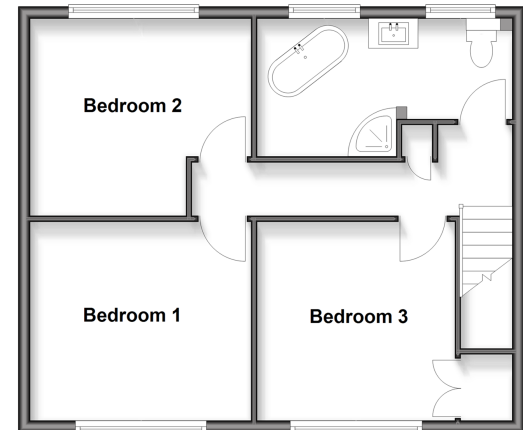
OUTSIDE

Front Garden
Rear Garden
Garage & Off Road Parking

Ground Floor
Approx. 57.0 sq. metres (613.3 sq. feet)

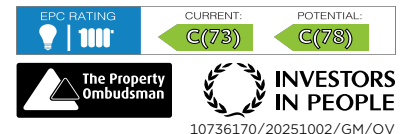


First Floor
Approx. 54.5 sq. metres (586.1 sq. feet)



Call Dover - 01304 214876 ■ wardsof Kent.co.uk

- Legal advice should be taken to verify fixtures/fittings, planning, alterations and/or lease details
- Appliances & services are untested, dimensions are approximate and floor plans are not to scale
- Through a Homewise Home For Life Plan people aged 60+ can secure this property for up to 50% less, by purchasing a Lifetime Lease.



10736170/20251002/GM/OV