



Guide Price
£375,000

Freehold

3x  1x  1x 

**Meadow View Road,
Shepherdswell, Dover,
Kent, CT15**

OVER 60?

Secure this property
for up to **59% less!**

Wards
Helping you move forwards



Main features

- Sought after village location
- Property being sold with no onward chain complications
- Low maintenance private rear garden, ideal for entertaining friends and family
- Ideal home for a growing family
- Ample off-road parking and garage, perfect for when the guests descend

Accommodation

GROUND FLOOR

Entrance Hallway

Lounge : 18'2 x 17'3 (5.54m x 5.26m)

Kitchen : 13'5 x 9'8 (4.09m x 2.95m)

Bedroom 1 : 13'5 x 12'10 (4.09m x 3.91m)

Bedroom 2: 13'5 x 9'0 (4.09m x 2.75m)

Bedroom 3 : 13'5 x 7'6 (4.09m x 2.29m)

Family Bathroom

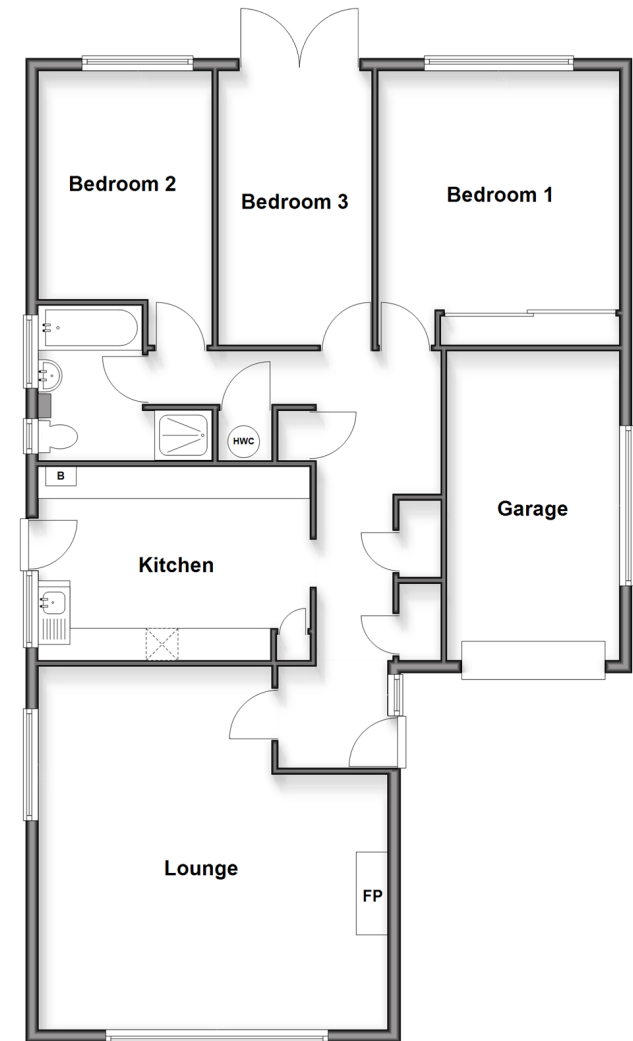
OUTSIDE

Front Garden

Rear Garden

Garage & Off Road Parking

Ground Floor
Approx. 116.0 sq. metres (1249.0 sq. feet)



Call Dover - 01304 214876 ■ wardsofkent.co.uk

- Legal advice should be taken to verify fixtures/fittings, planning, alterations and/or lease details
- Appliances & services are untested, dimensions are approximate and floor plans are not to scale
- Through a Homewise Home For Life Plan people aged 60+ can secure this property for up to 50% less, by purchasing a Lifetime Lease.



10734622/20250906/TE/GM