



Price

£400,000

Freehold

4x  1x  1x 

Green Acres, Eythorne,
Dover, Kent, CT15

OVER 60?

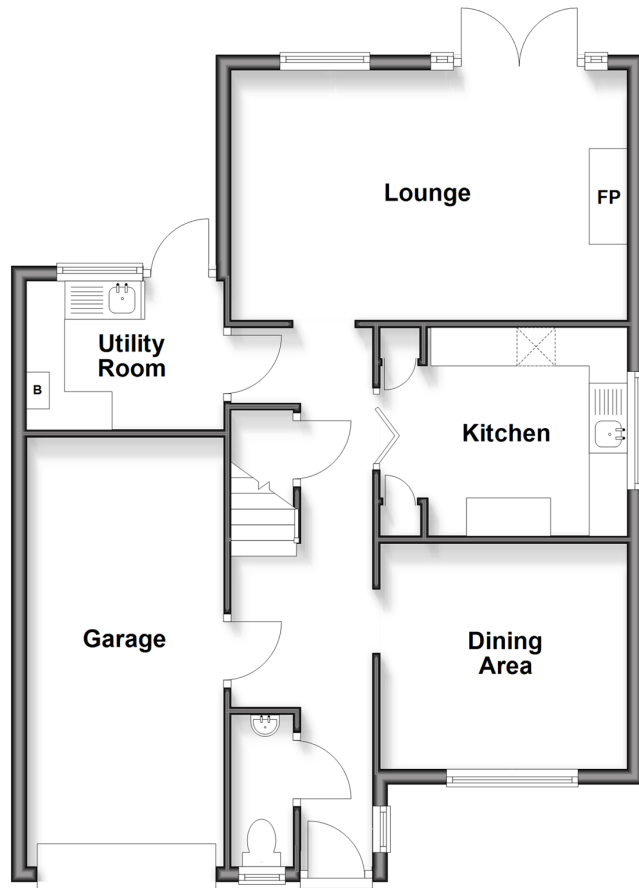
Secure this property
for up to **59% less!**

Wards

Helping you move forwards

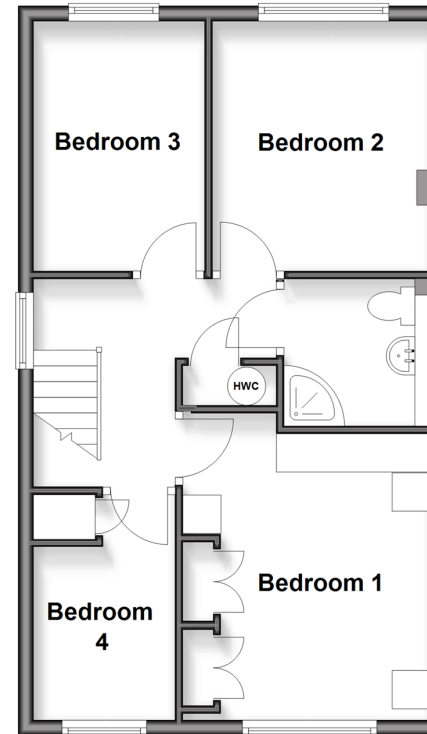
Ground Floor

Approx. 70.5 sq. metres (758.3 sq. feet)



First Floor

Approx. 47.5 sq. metres (511.5 sq. feet)



Accommodation

GROUND FLOOR

Entrance Hallway

Lounge : 17'1 x 10'6 (5.21m x 3.20m)

Kitchen: 10'8 x 8'8 (3.25m x 2.64m)

Utility Room : 7'9 x 6'4 (2.36m x 1.93m)

Dining Area

Downstairs Cloakroom

FIRST FLOOR

Landing

Bedroom 3 : 10'7 x 7'3 (3.23m x 2.21m)

Bedroom 2 : 10'7 x 9'5 (3.23m x 2.87m)

Bathroom : 6'3 x 6'3 (1.91m x 1.91m)

Bedroom 1 : 12'2 x 10'5 (3.71m x 3.18m)

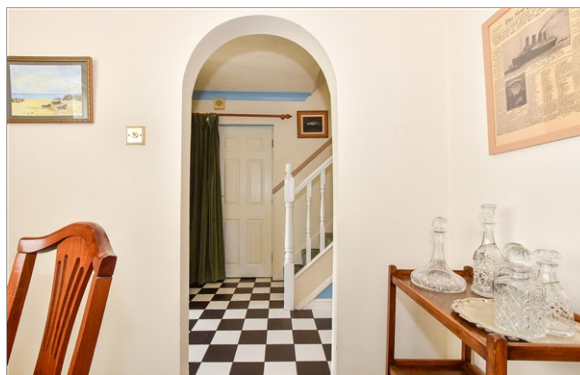
Bedroom 4 : 10'7 x 6'2 (3.23m x 1.88m)

OUTSIDE

Front Garden

Rear Garden

Garage & Off Road Parking



Main features

- Beautiful family home in a cul de sac location in the village of Eythorne
- Spacious bedrooms
- Garage & driveway for 3 cars, ideal for when the guests visit
- With excellent road transport links
- Modern double glazing & central heating



Nearest Schools

Primary Schools: Eythorne Elvington Community Primary 1.2 miles, Sibertswold C of E Primary at Shepherdswell 2.9 miles, Lydden Primary 3.3 miles
Secondary Schools: Dover Christchurch Academy 4.3 miles, Harbour School 5.0 miles, Dover College 5.1 miles.



Transport Information

Train Stations: Shepherdswell 2.6 miles, Kearsney 4.8 miles, Martin Mill 4.8 miles



Address

Green Acres, Eythorne, Dover, Kent, CT15



Directions

For directions to this property please contact us.



Wards
Helping you move forwards

Call Dover Branch 01304 214876 ■ wardsofkent.co.uk



- Legal advice should be taken to verify fixtures/fittings, planning, alterations and/or lease details
- Appliances & services are untested, dimensions are approximate and floor plans are not to scale
- Through a Homewise Home For Life Plan people aged 60+ can secure this property for up to 50% less, by purchasing a Lifetime Lease.

EPC RATING

CURRENT: D(58) POTENTIAL: B(82)

10736089/20251023/TE/OV