



Guide Price
£450,000

Freehold

4x  3x  2x 

**Orme Cottage,
Barfrestone, Dover,
Kent, CT15**

OVER 60?

Secure this property
for up to **59% less!**

Wards
Helping you move forwards



Main features

- Generous room sizes, ideal for families, guests, or home offices
- Brimming with historic charm
- In need of modernisation, a blank canvas to create a bespoke home
- Chain-Free sale
- Situated in the idyllic village of Barfreestone

Accommodation

SPLIT LEVEL GROUND FLOOR

Entrance Hallway
 Dining Room: 16'2 x 9'6 (4.93m x 2.90m)
 Kitchen : 10'1 x 8'5 (3.08m x 2.57m)
 Utility Area : 6'2 x 6'1 (1.88m x 1.86m)
 Downstairs Cloakroom
 Shower Room
 Lounge : 14'7 x 10'5 (4.45m x 3.18m)
 Bedroom 4: 14'1 x 10'4 (4.30m x 3.15m)

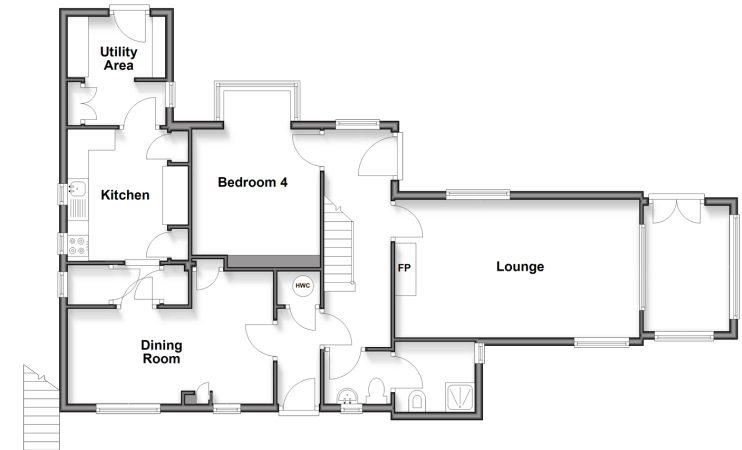
FIRST FLOOR

Landing
 Bedroom 1 : 18'3 x 10'5 (5.57m x 3.18m)
 Bedroom 2 : 11'2 x 10'3 (3.41m x 3.13m)
 Bedroom 3 : 15'4 x 8'7 (4.68m x 2.62m)
 Balcony
 Dining Area: 10'4 x 9'6 (3.15m x 2.90m)
 Bathroom
 En-Suite Bathroom: 8'7 x 5'4 (2.62m x 1.63m)

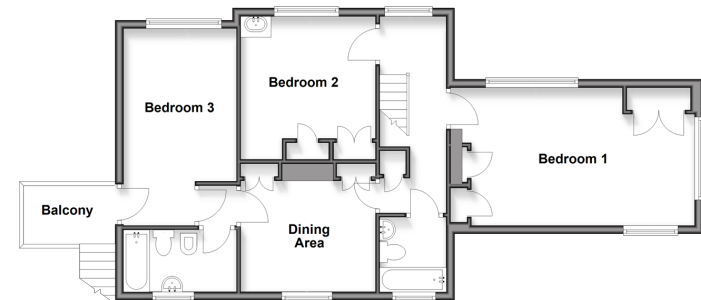
OUTSIDE

Front Garden
 Rear Garden
 Off Road Parking
 Car Port

Split Level Ground Floor
 Approx. 87.8 sq. metres (945.1 sq. feet)



First Floor
 Approx. 70.1 sq. metres (754.1 sq. feet)



Call Dover - 01304 214876 ■ wardsof Kent.co.uk

- Legal advice should be taken to verify fixtures/fittings, planning, alterations and/or lease details
- Appliances & services are untested, dimensions are approximate and floor plans are not to scale
- Through a Homewise Home For Life Plan people aged 60+ can secure this property for up to 59% less, by purchasing a Lifetime Lease.



10736093/20250809/TE/OV