



Price
£325,000

Freehold

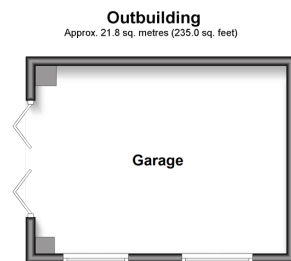
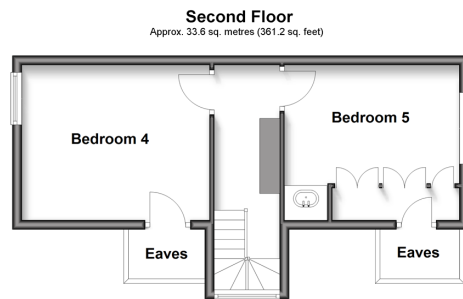
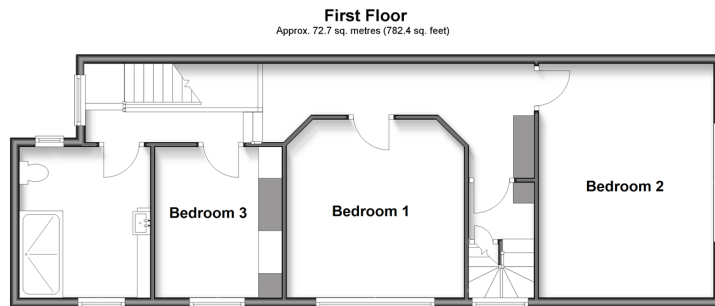
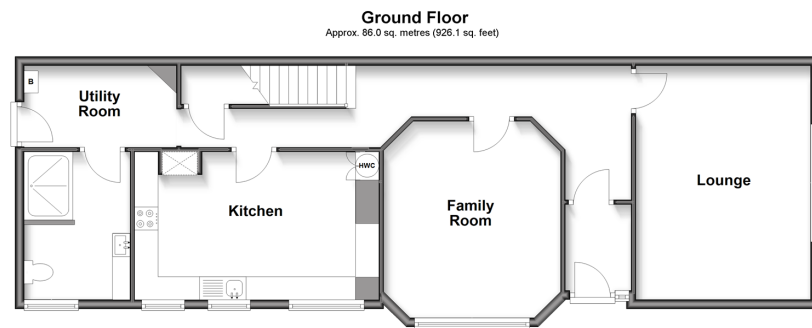
5x  2x  2x 

**Barton Road, Dover,
Kent, CT16**

OVER 60?

Secure this property
for up to **59% less!**

Wards
Helping you move forwards



Accommodation

GROUND FLOOR

Entrance Porch

Entrance Hallway

Family Room : 14'7 x 13'4 (4.45m x 4.07m)

Lounge : 16'6 x 10'9 (5.03m x 3.28m)

Kitchen : 17'1 x 9'2 (5.21m x 2.80m)

Shower Room : 9'9 x 7'3 (2.97m x 2.21m)

Utility Room : 12'1 x 6'2 (3.69m x 1.88m)

FIRST FLOOR

Landing

Shower Room : 9'3 x 9'2 (2.82m x 2.80m)

Bedroom 3 : 9'6 x 8'1 (2.90m x 2.47m)

Bedroom 1 : 13'5 x 13'2 (4.09m x 4.02m)

Bedroom 2 : 11'1 x 9'9 (3.38m x 2.97m)

SECOND FLOOR

Landing

Bedroom 4: 11'3 x 10'9 (3.43m x 3.28m)

Bedroom 5 : 13'4 x 11'2 (4.07m x 3.41m)

OUTBUILDING

Garage

OUTSIDE

Front Garden

Rear Garden

Off Road Parking



Main features

- Period home in Dover
- Off street parking
- Easy to manage low maintenance rear garden
- Large rooms throughout, as well as many period features, including high ceilings
- Close to Dover town with its selection of shops and schools



Nearest Schools

Primary Schools: Barton Junior School 0.0 miles, Charlton C of E Primary 0.1 miles, St Richard's Catholic Primary 0.4 miles
Secondary Schools: St Edmund's Catholic School 0.2 miles, Dover Grammar School for Girls 0.2 miles, Dover



Transport Information

Train Stations: Dover Priory 1.3 miles, Kearsney 2.2 miles, Martin Mill 4.2 miles



Address

Barton Road, Dover, Kent, CT16



Directions

For directions to this property please contact us.



Call Dover Branch 01304 214876 ■ wardsofkent.co.uk



- If buying to let, the energy rating will need to be improved to at least 'E' rating before you can let the property
- Appliances & services are untested, dimensions are approximate and floor plans are not to scale

- Legal advice should be taken to verify fixtures/fittings, planning, alterations and/or lease details
- Through a Homewise Home For Life Plan people aged 60+ can secure this property for up to 59% less, by purchasing a Lifetime Lease.

10735686/20250628/TE/OV