



Guide Price
£450,000

Freehold

4x  1x  2x 

**Forge Lane, Whitfield,
Dover, Kent, CT16**

OVER 60?

Secure this property
for up to **59% less!**

Wards
Helping you move forwards



Main features

- On a large plot for keen gardeners
- Sought after village location of Whitfield
- Plenty of off street parking for when the guests come to visit
- Fantastic transport links with easy access to A256 & A2/M2
- Whitfield village has a post office, pub, as well as a regular bus service

Accommodation

GROUND FLOOR

Entrance Porch

Lounge : 16'8 x 12'4 (5.08m x 3.76m)

Kitchen/Diner: 22'4 x 11'7 (6.81m x 3.53m)

Inner Hallway

Bathroom : 7'6 x 5'5 (2.29m x 1.65m)

Office : 9'9 x 8'10 (2.97m x 2.69m)

Bedroom 3 : 11'9 x 9'4 (3.58m x 2.85m)

Bedroom 2 : 11'9 x 11'2 (3.58m x 3.41m)

Bedroom 1 : 12'4 x 10'9 (3.76m x 3.28m)

FIRST FLOOR

Loft Room: 12'7 x 9'7 (3.84m x 2.92m)

OUTSIDE

Front Garden

Rear Garden

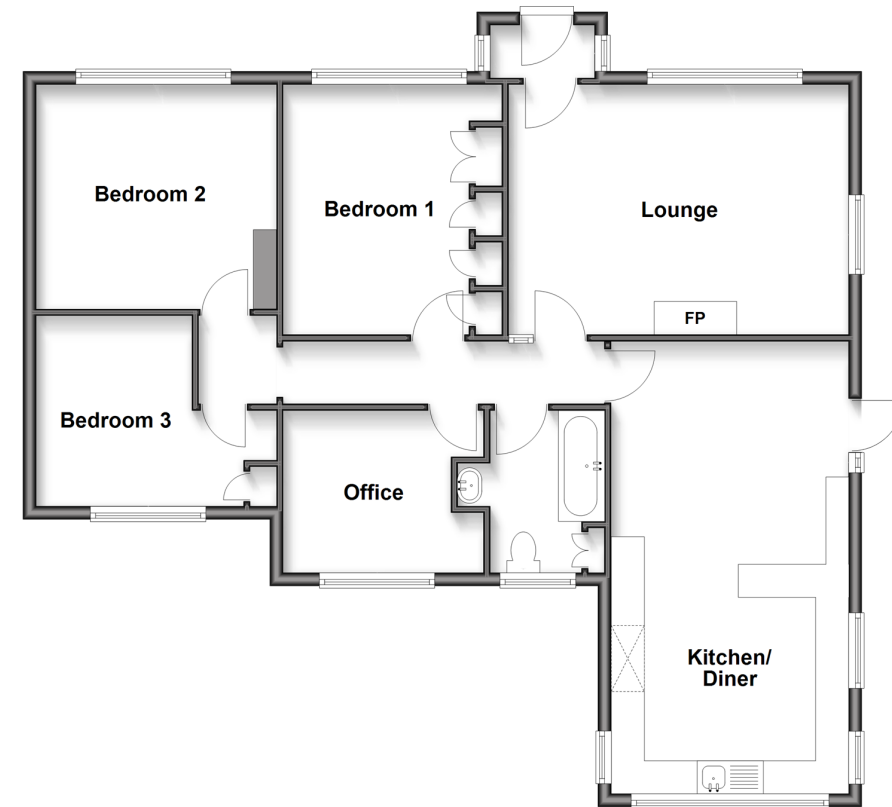
Driveway Parking

Green House

Workshop/Outbuilding

Ground Floor

Approx. 100.8 sq. metres (1085.1 sq. feet)



Call Dover - 01304 214876 ■ wardsof Kent.co.uk

- Legal advice should be taken to verify fixtures/fittings, planning, alterations and/or lease details
- Appliances & services are untested, dimensions are approximate and floor plans are not to scale
- Through a Homewise Home For Life Plan people aged 60+ can secure this property for up to 59% less, by purchasing a Lifetime Lease.



10735451/20250517/TE/OV