



Price
£425,000

Freehold

3x  1x  2x 

**Mill Fields,
Shepherdswell, Dover,
Kent, CT15**

OVER 60?

Secure this property
for up to **59% less!**

Wards
Helping you move forwards



Main features

- Large home with conservatory to the rear
- Quiet cul-de-sac with stunning country walks
- Garage and recently installed new block paving driveway
- Beautiful village of Shepherdswell
- Fantastic access to A2/M2

Accommodation

GROUND FLOOR

Entrance Hallway

Lounge : 20'11 x 10'6 (6.38m x 3.20m)

Conservatory : 11'11 x 9'10 (3.63m x 3.00m)

Bedroom 3 : 10'6 x 7'9 (3.20m x 2.36m)

Kitchen : 13'10 x 9'10 (4.22m x 3.00m)

Bedroom 2 : 10'10 x 9'10 (3.30m x 3.00m)

Bedroom 1 : 14'3 x 11'6 (4.35m x 3.51m)

Bathroom : 8'0 x 7'2 (2.44m x 2.19m)

OUTBUILDING

Garage

OUTSIDE

Front Garden

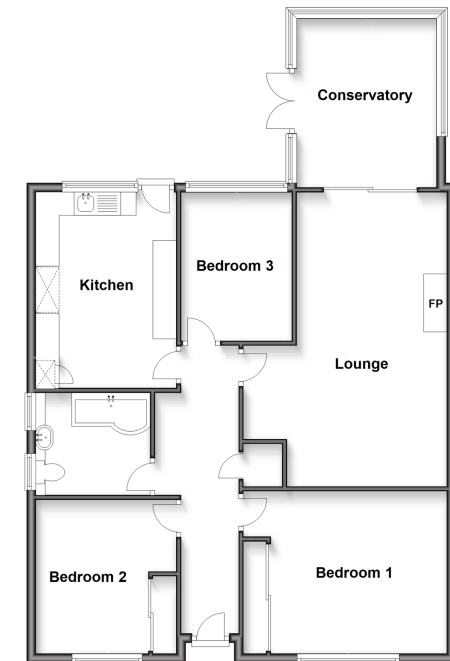
Rear Garden

Green House

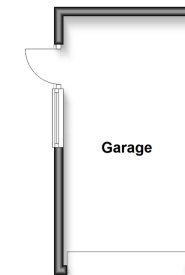
Shed

Driveway Parking

Ground Floor
Approx. 98.4 sq. metres (1059.2 sq. feet)

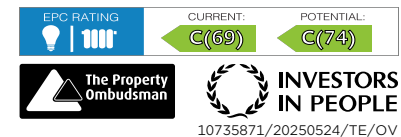


Outbuilding
Approx. 14.9 sq. metres (159.9 sq. feet)



Call Dover - 01304 214876 ■ wardsof Kent.co.uk

- Legal advice should be taken to verify fixtures/fittings, planning, alterations and/or lease details
- Appliances & services are untested, dimensions are approximate and floor plans are not to scale
- Through a Homewise Home For Life Plan people aged 60+ can secure this property for up to 59% less, by purchasing a Lifetime Lease.



10735871/20250524/TE/OV