



Price
£210,000

Freehold

3x  1x  1x 

**Heathfield Avenue,
Dover, Kent, CT16**

OVER 60?

Secure this property
for up to **59% less!**

Wards
Helping you move forwards



Main features

- Period home with stunning views across Dover
- Ideal first-time purchase or buy to let opportunity
- In an elevated position from the road
- Close to Dover town centre with a selection of shops as well as close to primary and secondary schools
- Easy to manage rear garden

Accommodation

SPLIT LEVEL GROUND FLOOR

Entrance Hall
 Lounge: 14'2 x 10'6 (4.32m x 3.20m)
 Dining Area : 12'9 x 10'6 (3.89m x 3.20m)
 Kitchen : 12'8 x 7'7 (3.86m x 2.31m)
 Utility : 5'1 x 4'7 (1.55m x 1.40m)
 Downstairs Cloakroom

SPLIT LEVEL FIRST FLOOR

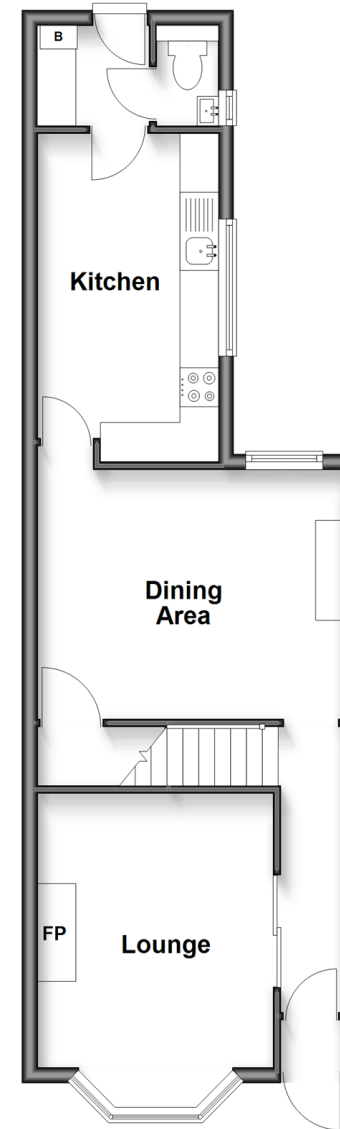
Landing
 Bedroom 1 : 13'8 x 11'6 (4.17m x 3.51m)
 Bedroom 2 : 10'6 x 10'1 (3.20m x 3.08m)
 Bathroom
 Bedroom 3 : 7'8 x 7'2 (2.34m x 2.19m)

OUTSIDE

Front Garden
 Rear Garden

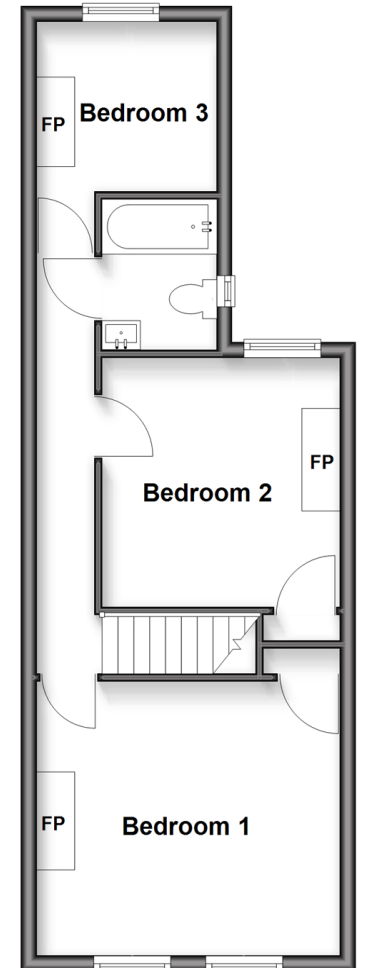
Split Level Ground Floor

Approx. 44.1 sq. metres (474.3 sq. feet)



Split Level First Floor

Approx. 40.3 sq. metres (433.7 sq. feet)



Call Dover - 01304 214876 ■ wardsof Kent.co.uk

- Legal advice should be taken to verify fixtures/fittings, planning, alterations and/or lease details
- Appliances & services are untested, dimensions are approximate and floor plans are not to scale
- Through a Homewise Home For Life Plan people aged 60+ can secure this property for up to 59% less, by purchasing a Lifetime Lease.



10735942/20250503/TE/OV