



**Price**

**£600,000**

**Freehold**

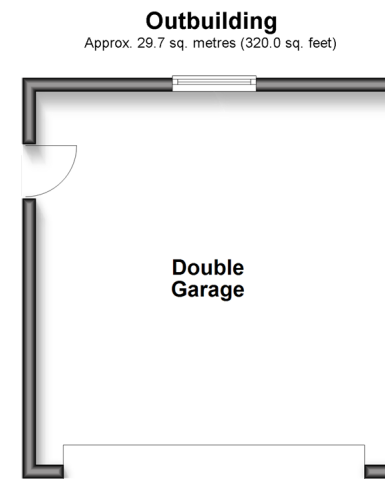
4x  2x  2x 

**Singledge Lane,  
Whitfield, Dover, Kent,  
CT16**

**OVER 60?**

Secure this property  
for up to **59% less!**

*Wards*  
Helping you move forwards



## Accommodation

### GROUND FLOOR

Entrance Hallway  
 Bedroom 1 : 15'0 x 12'0 (4.58m x 3.66m)  
 Bedroom 2 : 17'2 x 10'4 (5.24m x 3.15m)  
 Bedroom 3 : 15'0 x 7'7 (4.58m x 2.31m)  
 Shower Room  
 Bathroom  
 Lounge: 22'4 x 11'10 (6.81m x 3.61m)  
 Kitchen: 16'4 x 14'0 (4.98m x 4.27m)  
 Bedroom 4 : 12'1 x 11'10 (3.69m x 3.61m)

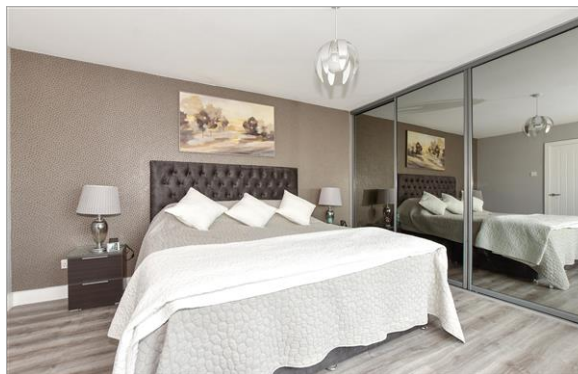
### OUTBUILDING

Double Garage

### OUTSIDE

Rear Garden  
 Fish Pond  
 Workshop/Outbuilding  
 Driveway Parking





## Main features

- Sought-after village location of Whitfield
- Perfect for the family to grow into
- Ample off-road parking, ideal for when the guests descend
- Beautifully presented throughout, a real turnkey home
- Double garage which could be converted into a home office or playroom



### Nearest Schools

Primary Schools: Whitfield and Aspen School 0.3 miles, Temple Ewell C of E Primary 0.7 miles, River Primary 1.0 miles  
Secondary Schools: Dover Christchurch Academy 0.9 miles, St Edmund's Catholic School 1.9 miles



### Transport Information

Train Stations: Kearsney 0.8 miles, Dover Priory 2.5 miles, Shepherdswell 3.0 miles



### Address

Singledge Lane, Whitfield, Dover, Kent, CT16



### Directions

For directions to this property please contact us.





Call Dover Branch 01304 214876 ■ [wardsofkent.co.uk](http://wardsofkent.co.uk)



■ Legal advice should be taken to verify fixtures/fittings, planning, alterations and/or lease details ■ Appliances & services are untested, dimensions are approximate and floor plans are not to scale  
■ Through a Homewise Home For Life Plan people aged 60+ can secure this property for up to 59% less, by purchasing a Lifetime Lease.

C(73) B(85)  
10734346/20250426/GM/GM1