



Price
£475,000

Freehold

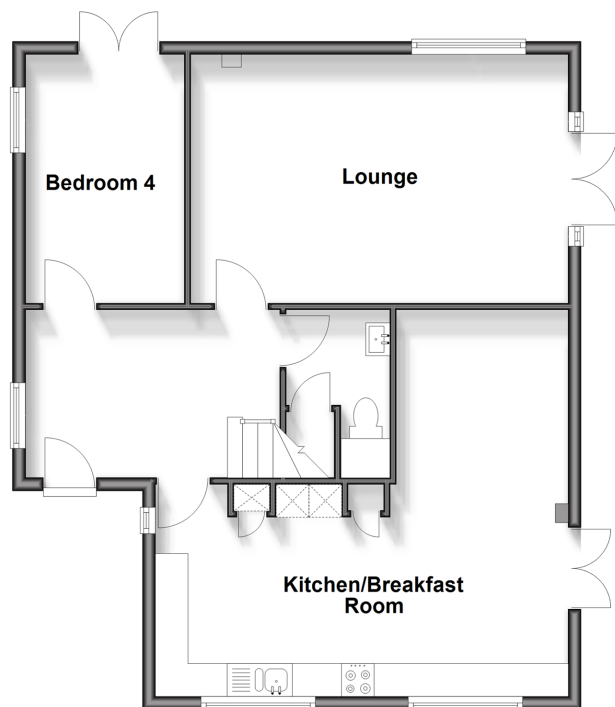
4x  1x  1x 

**St. Martin's Road,
Guston, Dover, Kent,
CT15**

Wards
Helping you move forwards

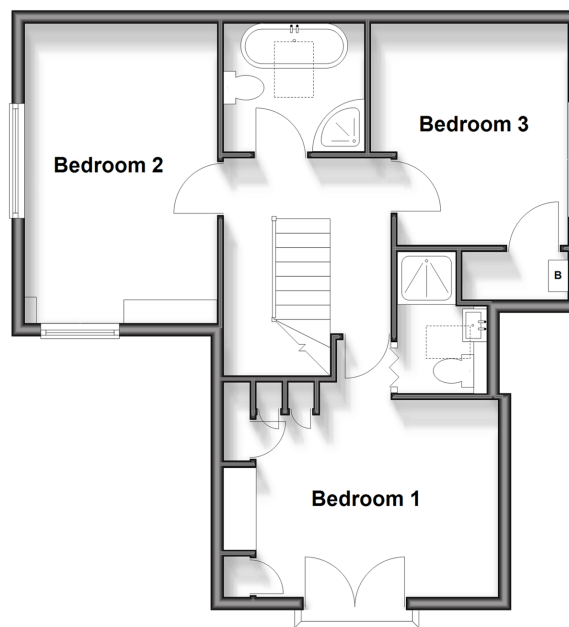
Ground Floor

Approx. 74.8 sq. metres (804.6 sq. feet)



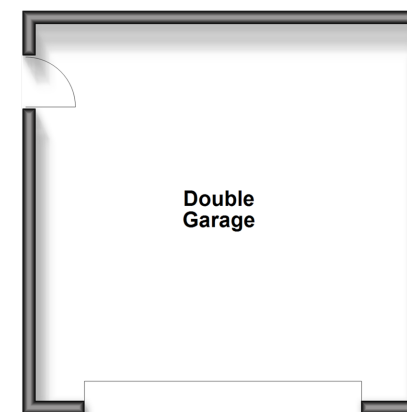
First Floor

Approx. 55.0 sq. metres (591.7 sq. feet)



Outbuilding

Approx. 33.0 sq. metres (355.1 sq. feet)



Accommodation

GROUND FLOOR

Entrance Hallway
Bedroom 4 : 12'5 x 8'0 (3.79m x 2.44m)
Downstairs Cloakroom
Lounge : 19'0 x 12'5 (5.80m x 3.79m)
Kitchen/Breakfast Room : (L-shaped) 19'4 x 12'3
(5.90m x 3.74m) plus 20'9 x 9'1 (6.33m x 2.77m)

FIRST FLOOR

Landing
Family Bathroom
Bedroom 1 : 13'9 x 10'11 (4.19m x 3.33m)
En-Suite Shower Room
Bedroom 2 : 14'8 x 9'10 (4.47m x 3.00m)
Bedroom 3 : 11'1 x 9'11 (3.38m x 3.02m)

OUTBUILDING

Double Garage

OUTSIDE

Front Garden
Rear Garden
Off Road Parking



Main features

- Chain free family home in sought after village location
- Ideal home for the family to grow into
- Close proximity to Dover Castle
- Beautifully presented throughout, a real turn-key home
- Ample off-road parking and double garage



Nearest Schools

Primary Schools: Guston C of E Primary 0.5 miles, Green Park Community Primary 0.8 miles, Charlton C of E Primary 1.0 miles
Secondary Schools: Duke of York's Royal Military School 0.5 miles, Dover Christchurch Academy 0.7 miles.



Transport Information

Train Stations: Dover Priory 1.6 miles, Kearsney 1.9 miles, Martin Mill 2.0 miles



Address

St. Martin's Road, Guston, Dover, Kent, CT15



Directions

For directions to this property please contact us.



Wards
Helping you move forwards

Call Dover Branch 01304 214876 ■ wardsofkent.co.uk



■ Legal advice should be taken to verify fixtures/fittings, planning, alterations and/or lease details ■ Appliances & services are untested, dimensions are approximate and floor plans are not to scale



10735949/20250404/TE/GM