



**Price**

**£615,000**

**Freehold**

4x  2x  3x 

**Riverside, Temple Ewell,  
Dover, Kent, CT16**

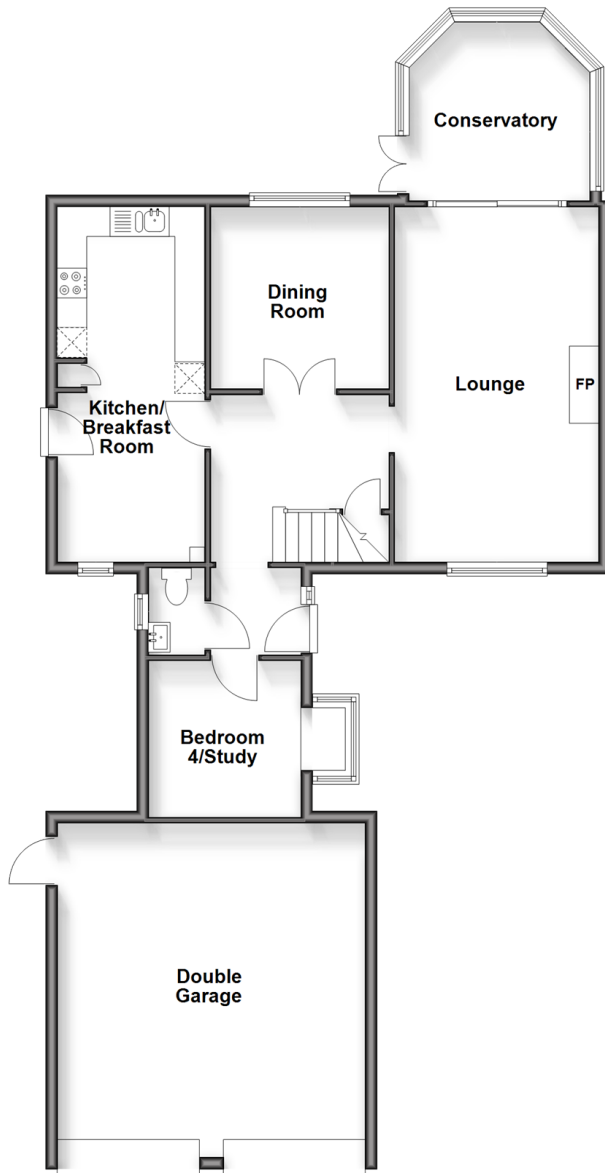
**OVER 60?**

Secure this property  
for up to **59% less!**

*Wards*  
Helping you move forwards

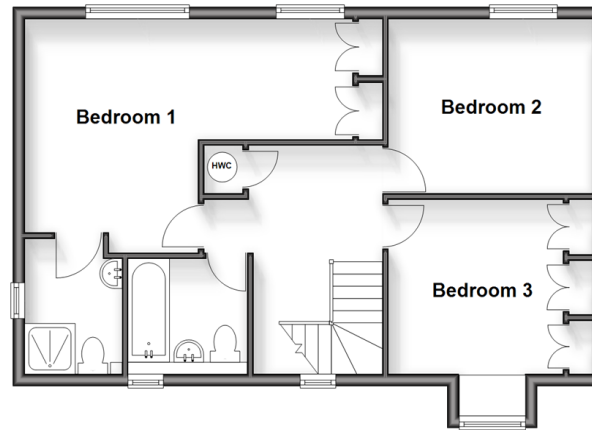
### Ground Floor

Approx. 104.3 sq. metres (1122.6 sq. feet)



### First Floor

Approx. 58.0 sq. metres (623.9 sq. feet)



## Accommodation

### GROUND FLOOR

Entrance Hallway

Lounge : 19'6 x 11'3 (5.95m x 3.43m)

Dining Room : 10'0 x 9'10 (3.05m x 3.00m)

Bedroom 4/Study : 8'10 x 8'7 (2.69m x 2.62m)

Kitchen/Breakfast Room : 19'6 x 8'2 (5.95m x 2.49m)

Conservatory : 10'5 x 9'5 (3.18m x 2.87m)

Downstairs Cloakroom

### FIRST FLOOR

Landing

Bedroom 1: (L-shaped) 12'11 x 9'6 (3.94m x 2.90m) plus 7'4 x 6'9 (2.24m x 2.06m)

En-Suite Shower Room

Bedroom 2 : 11'3 x 9'8 (3.43m x 2.95m)

Bedroom 3 : 11'4 x 9'7 (3.46m x 2.92m)

Bathroom

### OUTSIDE

Front Garden

Rear Garden

Side Garden

Double Garage

Off Road Parking





## Main features

- Beautiful home in the village of Temple Ewell
- Double garage & off road parking
- Beautiful garden with River Dour running behind, an idyllic setting
- Temple Ewell has excellent road access to A2/M2 & A20/M20
- Kearsney railway station is also close-by



### Nearest Schools

Primary Schools: Temple Ewell C of E Primary 0.3 miles, River Primary 1.1 miles, Lydden Primary 1.2 miles  
Secondary Schools: Dover Christchurch Academy 2.2 miles, Dover Grammar School for Girls 2.4 miles, St Edmund's Catholic School 2.5 miles



### Transport Information

Train Stations: Kearsney 0.7 miles, Dover Priory 3.4 miles, Shepherdswell 4.2 miles



### Address

Riverside, Temple Ewell, Dover, Kent, CT16



### Directions

For directions to this property please contact us.





**Wards**  
Helping you move forwards

Call Dover Branch 01304 214876 ■ [wardsofkent.co.uk](https://wardsofkent.co.uk)



- Legal advice should be taken to verify fixtures/fittings, planning, alterations and/or lease details
- Appliances & services are untested, dimensions are approximate and floor plans are not to scale
- Through a Homewise Home For Life Plan people aged 60+ can secure this property for up to 59% less, by purchasing a Lifetime Lease.



10735503/20250412/TE/OV