



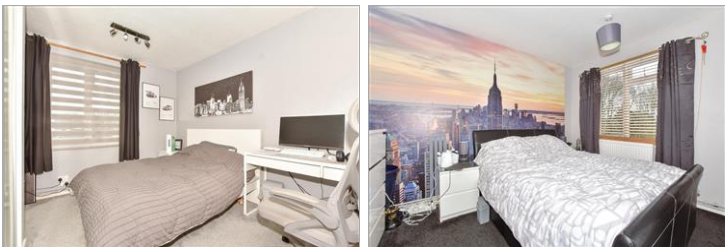
Price
£275,000

Freehold

3x  1x  1x 

**Namur Place, Burgoyne
Heights, Dover, Kent,
CT15**

Wards
Helping you move forwards



Main features

- Located in the ever popular **Burgoyne Heights**, close to primary and secondary schools
- Excellent road links, ideal if you commute
- Perfect home for a family in a quiet location
- 2 allocated off road parking spaces
- No onward chain

Accommodation

GROUND FLOOR

Entrance Hallway

Downstairs Cloakroom

Lounge : 13'3 x 11'4 (4.04m x 3.46m)

Kitchen : 13'3 x 11'4 (4.04m x 3.46m)

Conservatory : 17'4 x 9'4 (5.29m x 2.85m)

FIRST FLOOR

Landing

Bedroom 1 : 11'5 x 10'4 (3.48m x 3.15m)

Bedroom 2 : 11'6 x 10'4 (3.51m x 3.15m)

Bedroom 3 : 9'1 x 8'6 (2.77m x 2.59m)

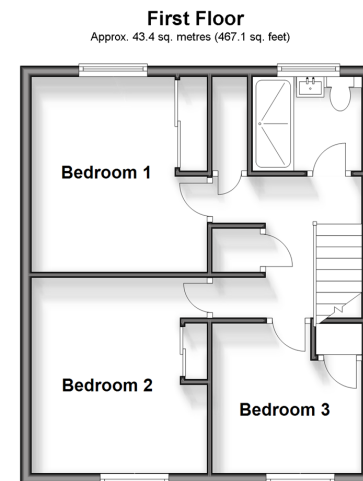
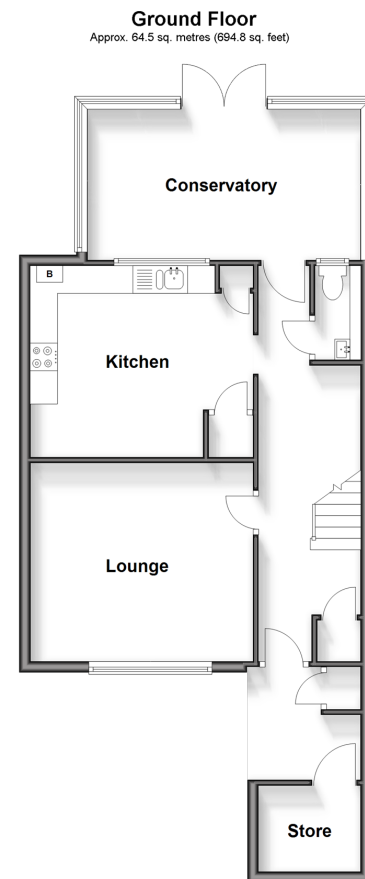
Bathroom

OUTSIDE

Front Garden

Rear Garden

Off Road Parking



Call Dover - 01304 214876 ■ wardsof Kent.co.uk

- Legal advice should be taken to verify fixtures/fittings, planning, alterations and/or lease details
- Appliances & services are untested, dimensions are approximate and floor plans are not to scale