



Guide Price
£190,000

Leasehold

2x  1x  2x 

**Redlands Court, London
Road, River, Kent, CT17**

OVER 60?

Secure this property
for up to **59% less!**

Wards
Helping you move forwards



Main features

- Top floor spacious apartment
- Garage and residents off road parking
- Large refurbished balcony with bi-fold patio doors
- Sought after location of River
- Great transport links via Kearsney station and A2/M20 via Whitfield Hill

Accommodation

TOP FLOOR

Entrance Hallway

Lounge : 13'9 x 13'3 (4.19m x 4.04m)

Balcony

Kitchen/Diner : 13'3 x 9'10 (4.04m x 3.00m)

Bathroom

Separate Toilet

Bedroom 2 : 10'9 x 9'11 (3.28m x 3.02m)

Bedroom 1 : 14'9 x 10'11 (4.50m x 3.33m)

OUTSIDE

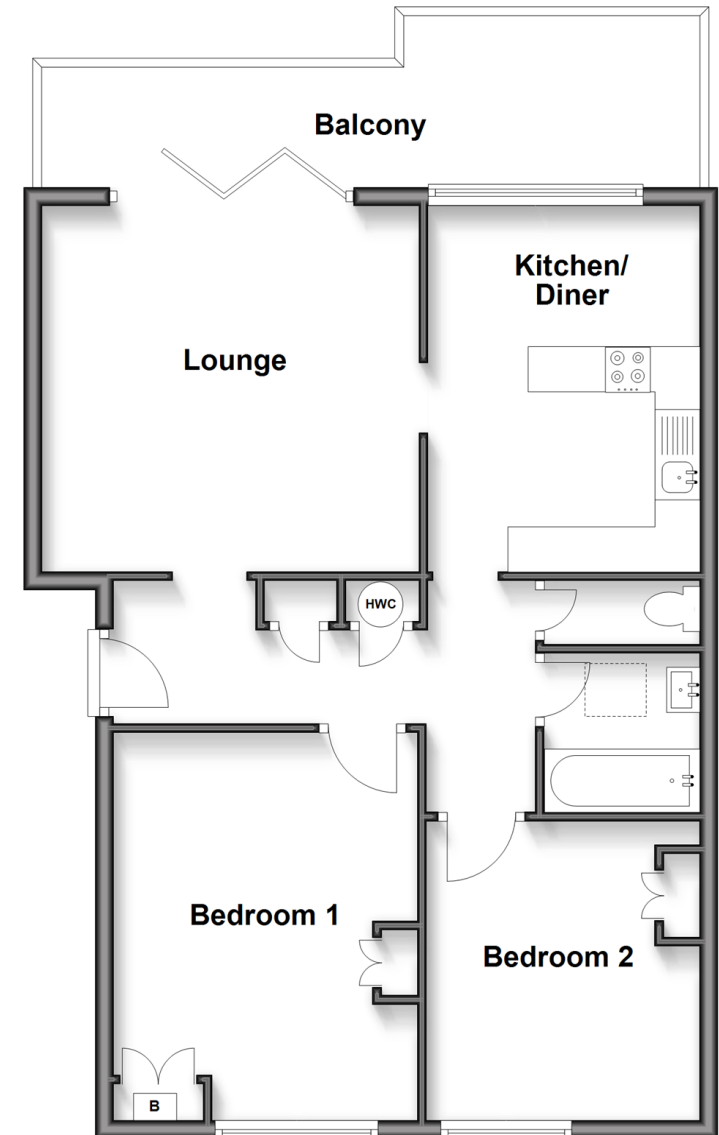
Garage

Residents Off Road Parking

Communal Gardens

Top Floor

Approx. 69.3 sq. metres (746.4 sq. feet)



Call Dover - 01304 214876 ■ wardsof Kent.co.uk

- Legal advice should be taken to verify fixtures/fittings, planning, alterations and/or lease details
- Appliances & services are untested, dimensions are approximate and floor plans are not to scale
- Through a Homewise Home For Life Plan people aged 60+ can secure this property for up to 59% less, by purchasing a Lifetime Lease.



10735837/20250320/CDH/CDH