



**Guide Price**  
**£150,000**

**Leasehold**

2x  1x  1x 

**Maxton Court,  
Folkestone Road, Dover,  
Kent, CT17**

**OVER 60?**

Secure this property  
for up to **59% less!**

*Wards*  
Helping you move forwards





## Main features

- Large purpose built first floor apartment
- Sought after location of Maxton
- Off road parking and garage
- Ideal first time purchase or if you are looking for a lock up and leave, this property is perfect
- Close to Dover Priory railway station with its fast links to London

## Accommodation

### FIRST FLOOR

#### Entrance Hallway

Lounge : 17'4 x 10'4 (5.29m x 3.15m)

Bedroom 1 : 13'1 x 9'2 (3.99m x 2.80m)

Bathroom : 6'4 x 5'9 (1.93m x 1.75m)

Bedroom 2 : 9'8 x 9'2 (2.95m x 2.80m)

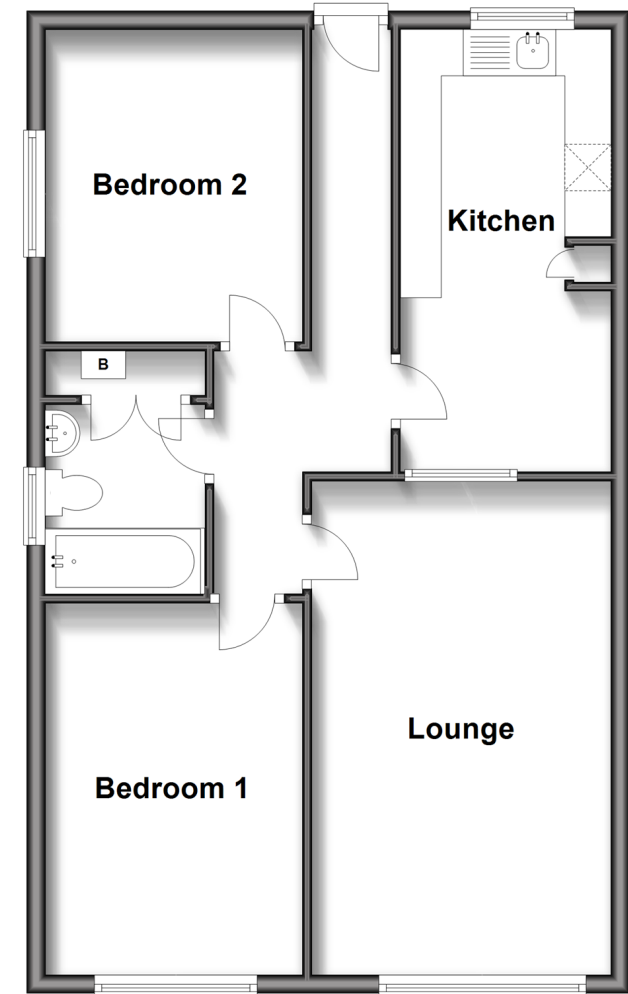
Kitchen: 14'7 x 7'2 (4.45m x 2.19m)

### OUTSIDE

Off Road Parking  
Garage

## First Floor

Approx. 62.3 sq. metres (670.8 sq. feet)



**Call Dover - 01304 214876 ■ [wardsof Kent.co.uk](http://wardsof Kent.co.uk)**

- Legal advice should be taken to verify fixtures/fittings, planning, alterations and/or lease details
- Appliances & services are untested, dimensions are approximate and floor plans are not to scale
- Through a Homewise Home For Life Plan people aged 60+ can secure this property for up to 50% less, by purchasing a Lifetime Lease.



10735486/20250816/TE/OV