



OVER 60?

Secure this property
for up to **59% less!**

Guide Price
£200,000

Freehold

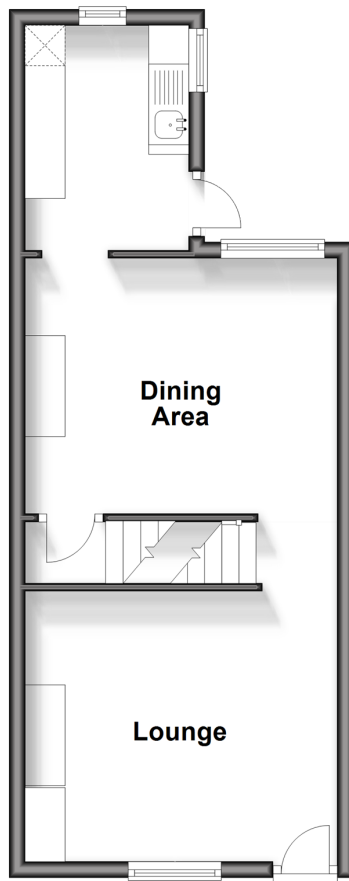
2x  1x  1x 

**St. Radigund's Road,
Dover, Kent, CT17**

Wards
Helping you move forwards

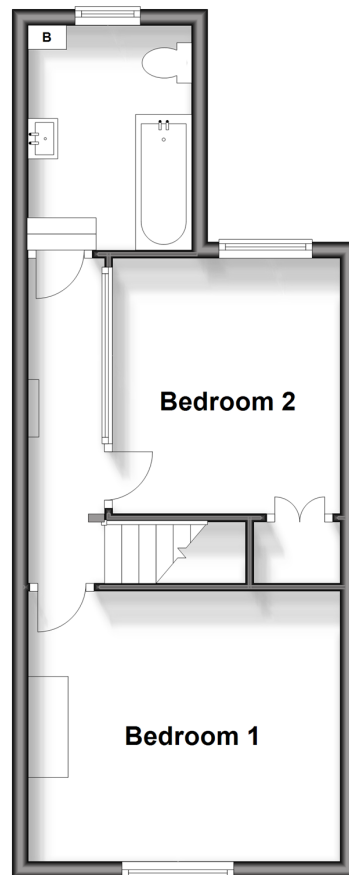
Split Level Ground Floor

Approx. 35.0 sq. metres (376.7 sq. feet)



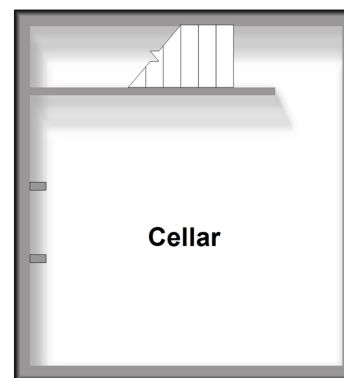
Split Level First Floor

Approx. 35.0 sq. metres (376.7 sq. feet)



Basement

Approx. 16.4 sq. metres (176.3 sq. feet)



Accommodation

SPLIT LEVEL GROUND FLOOR

Lounge : 12'7 x 10'7 (3.84m x 3.23m)

Dining Area : 12'7 x 10'1 (3.84m x 3.08m)

Kitchen : 8'8 x 6'7 (2.64m x 2.01m)

SPLIT LEVEL FIRST FLOOR

Landing

Bedroom 1 : 12'7 x 10'7 (3.84m x 3.23m)

Bedroom 2 : 10'1 x 8'9 (3.08m x 2.67m)

Bathroom

BASEMENT

Cellar

OUTSIDE

Rear Garden



Main features

- Period house
- Recently refurbished with new kitchen and bathroom
- Ever popular St. Radigund's area
- No onward chain complications, you could make this your own sooner than you think
- Close to Dover town



Nearest Schools

Primary Schools: White Cliffs Primary College for the Arts 0.4 miles, Barton Junior School 0.7 miles, Vale View Community School 0.7 miles
Secondary Schools: Dover Grammar School for Girls 0.9 miles, St Edmund's Catholic School 1.0 miles.



Transport Information

Train Stations: Kearsney 1.6 miles, Dover Priory 1.9 miles, Martin Mill 4.8 miles



Address

St. Radigund's Road, Dover, Kent, CT17



Directions

For directions to this property please contact us.



Wards
Helping you move forwards

Call Dover Branch 01304 214876 ■ wardsofkent.co.uk



- Legal advice should be taken to verify fixtures/fittings, planning, alterations and/or lease details
- Appliances & services are untested, dimensions are approximate and floor plans are not to scale
- Through a Homewise Home For Life Plan people aged 60+ can secure this property for up to 59% less, by purchasing a Lifetime Lease.



10735662/20250213/OV/OV