



OVER 60?

Secure this property
for up to **59% less!**

Price

£120,000

Leasehold

1x  1x  1x 

**Flat, 2, Albert Road,
Dover, Kent, CT16**

Wards
Helping you move forwards



Main features

- **Converted upper ground floor apartment in a period property**
- **Ideal first time purchase or pied-à-terre**
- **Beautifully presented**
- **Dover Priory railway station has a fast link to London**
- **Close to Dover town centre as well as a selection of supermarkets**

Accommodation

UPPER GROUND FLOOR

Entrance Area

Lounge : 12'1 x 9'6 (3.69m x 2.90m)

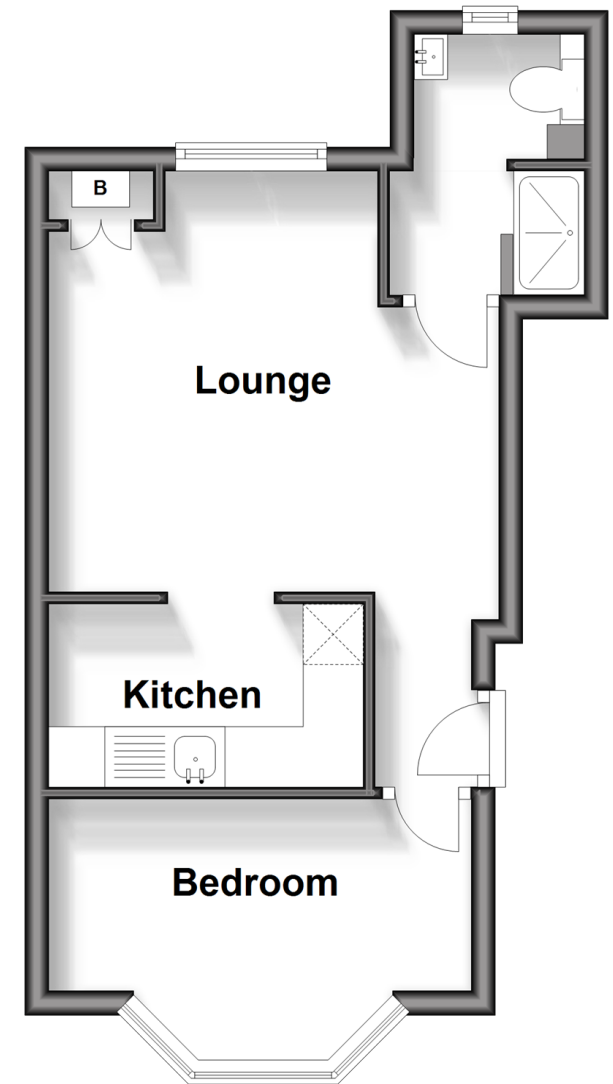
Kitchen: 8'5 x 4'9 (2.57m x 1.45m)

Shower Room

Bedroom : 11'6 x 8'4 (3.51m x 2.54m)

Upper Ground Floor

Approx. 27.3 sq. metres (294.4 sq. feet)



Call Dover - 01304 214876 ■ wardsofkent.co.uk

- Legal advice should be taken to verify fixtures/fittings, planning, alterations and/or lease details
- Appliances & services are untested, dimensions are approximate and floor plans are not to scale
- Through a Homewise Home For Life Plan people aged 60+ can secure this property for up to 59% less, by purchasing a Lifetime Lease.

