



OVER 60?

Secure this property
for up to **59% less!**

Guide Price
£250,000

Freehold

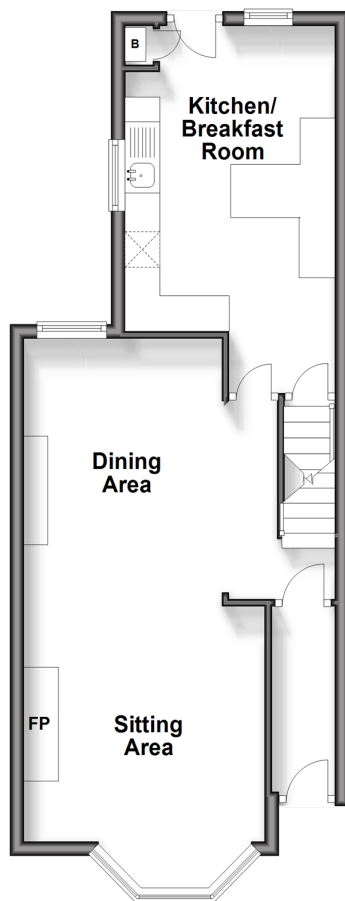
3x  1x  2x 

**Beaconsfield Avenue,
Dover, Kent, CT16**

Wards
Helping you move forwards

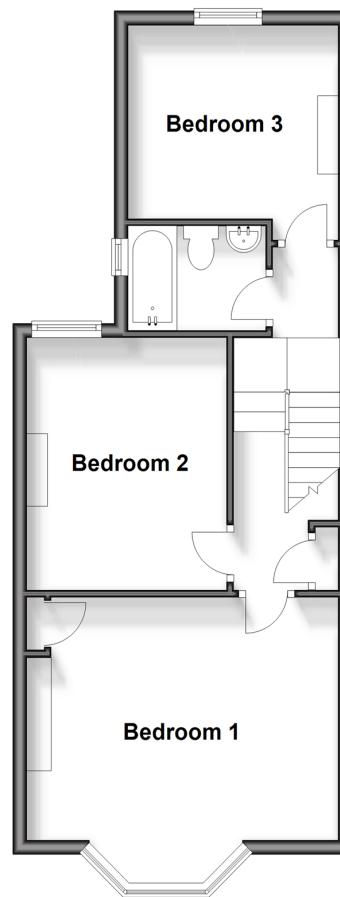
Ground Floor

Approx. 44.4 sq. metres (478.3 sq. feet)



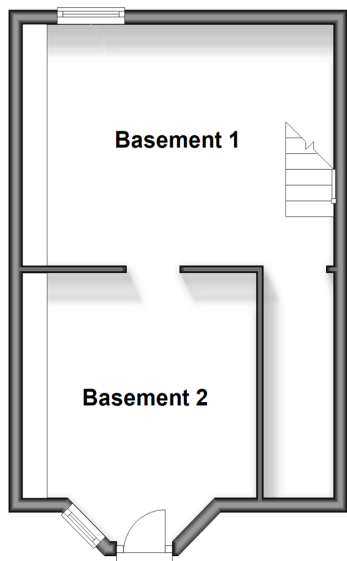
Split Level First Floor

Approx. 45.1 sq. metres (486.0 sq. feet)



Basement

Approx. 30.7 sq. metres (330.1 sq. feet)



Accommodation

GROUND FLOOR

Entrance Hallway
Sitting Area : 13'0 x 10'9 (3.97m x 3.28m)
Dining Area : 14'3 x 11'8 (4.35m x 3.56m)
Kitchen/Breakfast Room : 13'11 x 9'2 (4.24m x 2.80m)

BASEMENT

Basement 1 : 14'3 x 11'3 (4.35m x 3.43m)
Basement 2 : 13'0 x 10'9 (3.97m x 3.28m)

SPLIT LEVEL FIRST FLOOR

Landing
Bedroom 3 : 9'6 x 8'7 (2.90m x 2.62m)
Bathroom : 6'3 x 5'11 (1.91m x 1.80m)
Bedroom 2 : 11'0 x 9'10 (3.36m x 3.00m)
Bedroom 1 : 14'6 x 10'10 (4.42m x 3.30m)

OUTSIDE

Front Garden
Rear Garden



Main features

- Arranged over 3 floors
- Easy to manage low maintenance rear garden
- Recently decorated throughout with new gadgets, ready to move into and enjoy
- No onward chain complications, could be your home sooner than you think
- Dover town with a selection of shops and schools are close by



Nearest Schools

Primary Schools: Charlton C of E Primary 0.1 miles, St Richard's Catholic Primary 0.4 miles, Barton Junior School 0.6 miles
 Secondary Schools: Dover Grammar School for Girls 0.2 miles, St Edmund's Catholic School 0.3 miles



Transport Information

Train Stations: Dover Priory 1.2 miles, Kearsney 2.0 miles, Martin Mill 4.1 miles



Address

Beaconsfield Avenue, Dover, Kent, CT16



Directions

For directions to this property please contact us.



Wards
Helping you move forwards

Call Dover Branch 01304 214876 ■ wardsofkent.co.uk



- Legal advice should be taken to verify fixtures/fittings, planning, alterations and/or lease details
- Appliances & services are untested, dimensions are approximate and floor plans are not to scale
- Through a Homewise Home For Life Plan people aged 60+ can secure this property for up to 50% less, by purchasing a Lifetime Lease.



10722810/20250924/SB/OV