



Price
£500,000

Freehold

3x  2x  2x 

**Dover Road, Guston,
Dover, Kent, CT15**

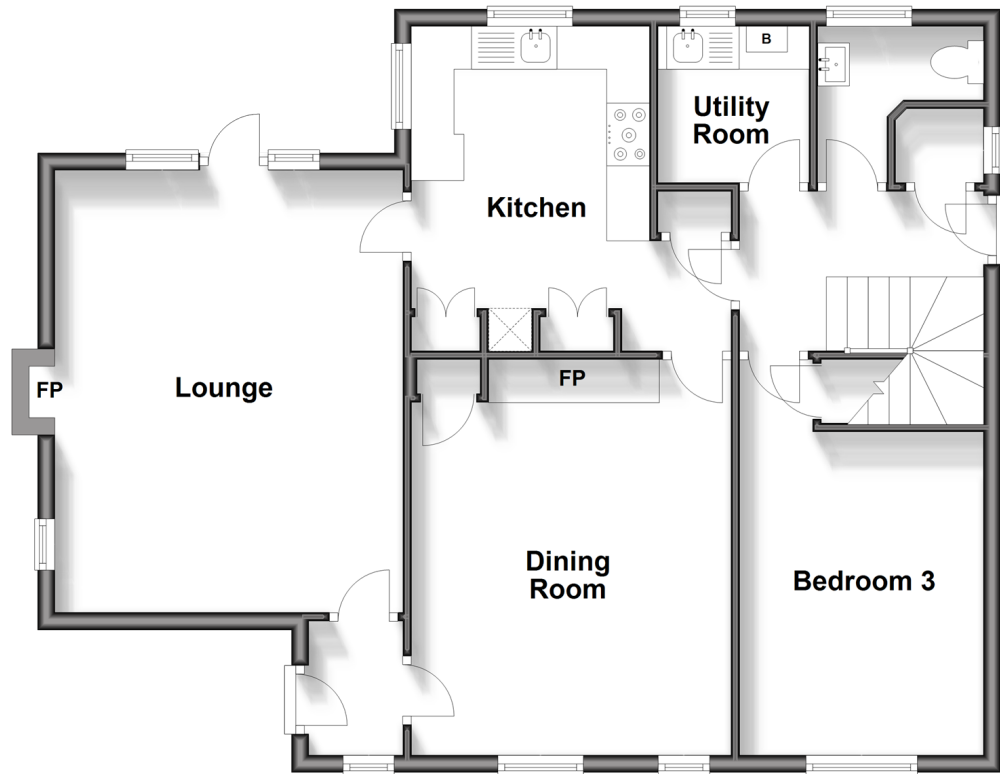
OVER 60?

Secure this property
for up to **59% less!**

Wards
Helping you move forwards

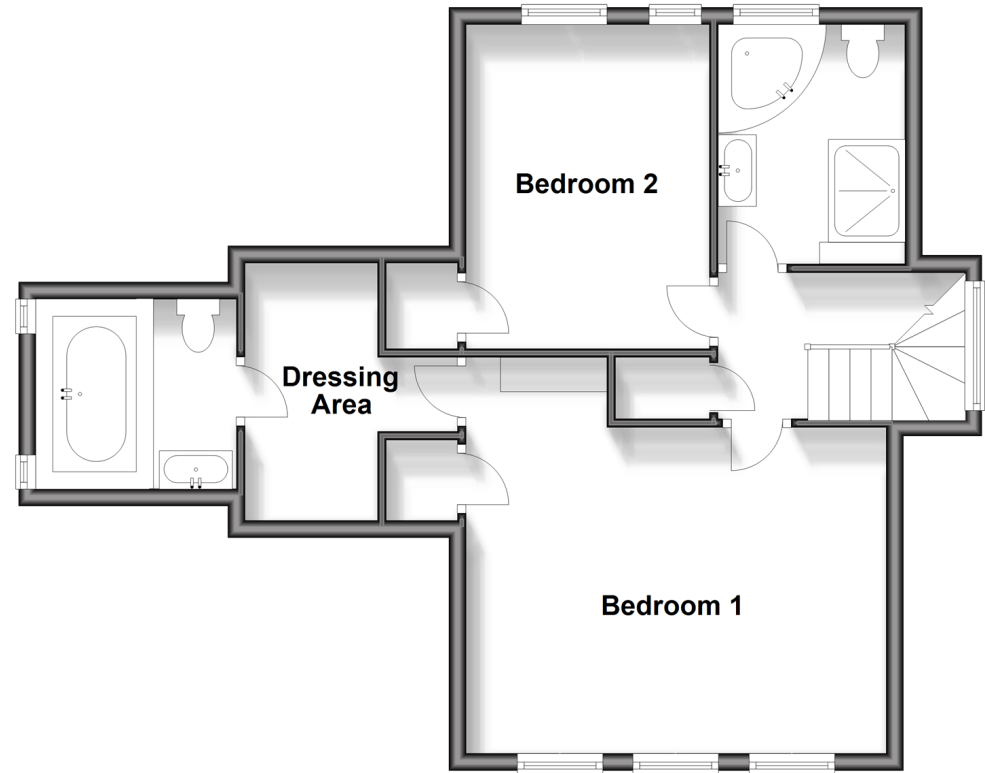
Ground Floor

Approx. 80.4 sq. metres (864.9 sq. feet)



First Floor

Approx. 57.1 sq. metres (614.4 sq. feet)



Accommodation

GROUND FLOOR

Entrance Hallway
 Lounge : 16'11 x 13'4 (5.16m x 4.07m)
 Dining Room : 13'7 x 12'4 (4.14m x 3.76m)
 Kitchen : 12'5 x 9'1 (3.79m x 2.77m)
 Bedroom 3 : 12'3 x 9'5 (3.74m x 2.87m)
 Utility Room : 5'10 x 5'10 (1.78m x 1.78m)
 Downstairs Cloakroom

FIRST FLOOR

Landing
 Bedroom 1 : 16'1 x 13'7 (4.91m x 4.14m)
 Dressing Area
 En-Suite Bathroom: 8'0 x 7'2 (2.44m x 2.19m)
 Bedroom 2 : 12'5 x 9'3 (3.79m x 2.82m)
 Family Bathroom : 9'2 x 7'2 (2.80m x 2.19m)

OUTSIDE

Front Garden
 Rear Garden
 Garage & Off Road Parking



Main features

- Stunning home, ready to move straight into
- Large rooms throughout with separate lounge & dining room
- En suite bathroom to main bedroom
- Guston village is peaceful and quiet but with Dover town only a short distance and soon to have a brand new bus service
- Beautiful garden



Nearest Schools

Primary Schools: Guston C of E Primary 0.7 miles, St Richard's Catholic Primary 1.5 miles, Langdon Primary 1.6 miles
Secondary Schools: Duke of York's Royal Military School 0.6 miles, St Edmund's Catholic School 1.1 miles



Transport Information

Train Stations: Dover Priory 2.6 miles, Martin Mill 3.2 miles, Kearsney 3.9 miles



Address

Dover Road, Guston, Dover, Kent, CT15



Directions

For directions to this property please contact us.



Wards
Helping you move forwards

Call Dover Branch 01304 214876 ■ wardsofkent.co.uk



■ Legal advice should be taken to verify fixtures/fittings, planning, alterations and/or lease details ■ Appliances & services are untested, dimensions are approximate and floor plans are not to scale
■ Through a Homewise Home For Life Plan people aged 60+ can secure this property for up to 59% less, by purchasing a Lifetime Lease.



10735756/20241109/TE/OV