



Guide Price
£280,000

Freehold

3x  1x  2x 

**Downs Close, East
Studdal, Dover, Kent,
CT15**

OVER 60?

Secure this property
for up to **59% less!**

Wards
Helping you move forwards



Main features

- Versatile family home
- Quiet cul-de-sac location in the village of East Studdal
- Garage and off road parking
- Easy access to the A256 and A2, with Deal, Dover and Canterbury close by
- Move in and enjoy your new home with stunning views across Kent countryside

Accommodation

GROUND FLOOR

- Entrance Hallway
- Lounge : 13'6 x 12'4 (4.12m x 3.76m)
- Conservatory : 11'2 x 9'9 (3.41m x 2.97m)
- Shower Room : 5'9 x 5'8 (1.75m x 1.73m)
- Dining Area : 11'9 x 9'6 (3.58m x 2.90m)
- Kitchen : 11'3 x 9'9 (3.43m x 2.97m)
- Bedroom 1 : 12'4 x 8'9 (3.76m x 2.67m)

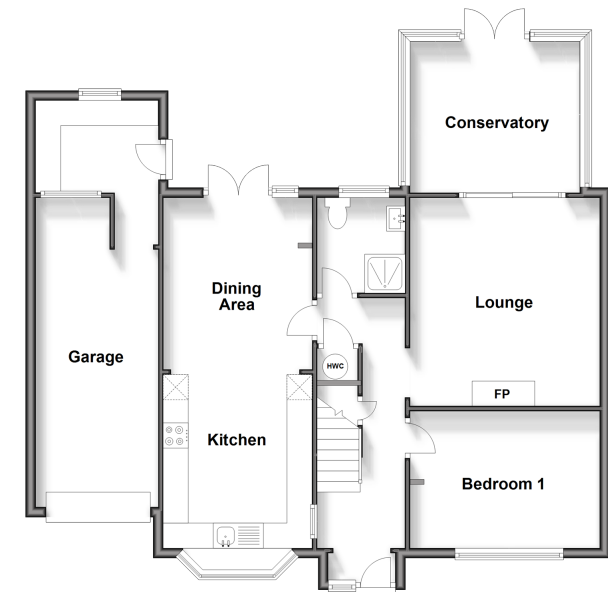
FIRST FLOOR

- Landing
- Bedroom 2 : 15'5 x 9'5 (4.70m x 2.87m)
- En-Suite Toilet
- Bedroom 3 : 9'9 x 9'3 (2.97m x 2.82m)
- Store Room : 9'8 x 6'1 (2.95m x 1.86m)

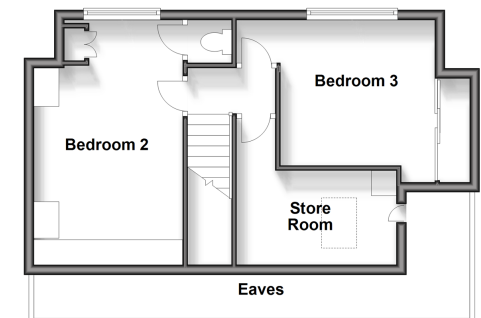
OUTSIDE

- Front Garden
- Rear Garden
- Garage & Off Road Parking

Ground Floor
Approx. 92.7 sq. metres (997.8 sq. feet)



First Floor
Approx. 48.2 sq. metres (518.5 sq. feet)



Call Dover - 01304 214876 ■ wardsof Kent.co.uk

- Legal advice should be taken to verify fixtures/fittings, planning, alterations and/or lease details
- Appliances & services are untested, dimensions are approximate and floor plans are not to scale
- Through a Homewise Home For Life Plan people aged 60+ can secure this property for up to 59% less, by purchasing a Lifetime Lease.



10735601/20241106/CDH/OV