



Guide Price

£200,000

Freehold

2x  1x  1x 

**Natal Road, Dover, Kent,
CT16**

OVER 60?

Secure this property
for up to **59% less!**

Wards
Helping you move forwards



Main features

- Large property with a corner plot garden
- Potential to extend (subject to the necessary planning consents)
- No onward chain complications
- Ideal home for a first-time buyer, or buy to let investment
- Close proximity to both primary and secondary schools

Accommodation

GROUND FLOOR

Lounge : 21'3 x 11'1 (6.48m x 3.38m)

Kitchen/Diner : 21'3 x 7'9 (6.48m x 2.36m)

FIRST FLOOR

Landing

Bathroom

Separate Cloakroom

Bedroom 1 : 13'6 x 9'2 (4.12m x 2.80m)

Bedroom 2 : 13'6 x 8'4 (4.12m x 2.54m)

OUTBUILDING

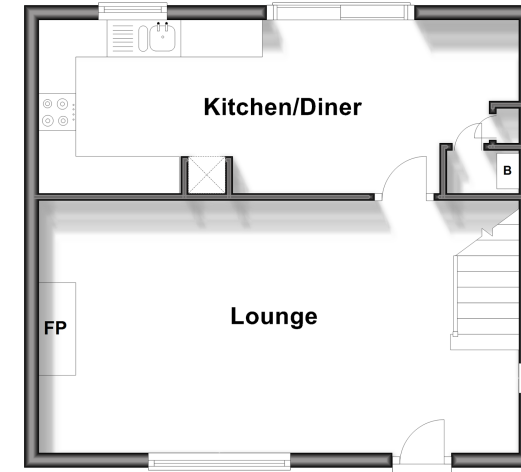
Outbuilding

OUTSIDE

Front, Rear & Side Gardens

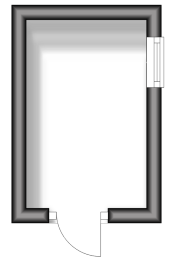
Ground Floor

Approx. 38.0 sq. metres (409.4 sq. feet)



Outbuilding

Approx. 4.2 sq. metres (44.8 sq. feet)



First Floor

Approx. 38.0 sq. metres (409.4 sq. feet)



Call Dover - 01304 214876 ■ wardsforkent.co.uk

- Legal advice should be taken to verify fixtures/fittings, planning, alterations and/or lease details
- Appliances & services are untested, dimensions are approximate and floor plans are not to scale
- Through a Homewise Home For Life Plan people aged 60+ can secure this property for up to 59% less, by purchasing a Lifetime Lease.



10735739/20241014/TE/GM