



Price
£325,000

Freehold

3x  1x  1x 

**Minnis Lane, River,
Dover, Kent, CT17**

OVER 60?

Secure this property
for up to **59% less!**

Wards
Helping you move forwards



Main features

- **Extended family home**
- **Off street parking and a flat garden**
- **Sought after village location of River**
- **Beautifully presented throughout, stunning kitchen/diner**
- **Excellent transport links with A2/M2 as well as Kearsney mainline railway station**

Accommodation

GROUND FLOOR

Entrance Hall

Lounge: 12'9 x 11'11 (3.89m x 3.63m)

Kitchen/Diner : 21'2 x 12'9 (6.46m x 3.89m)

FIRST FLOOR

Landing

Bathroom : 6'9 x 5'4 (2.06m x 1.63m)

Bedroom 2 : 9'1 x 8'7 (2.77m x 2.62m)

Bedroom 3 : 11'9 x 7'7 (3.58m x 2.31m)

Bedroom 1 : 12'9 x 10'4 (3.89m x 3.15m)

OUTSIDE

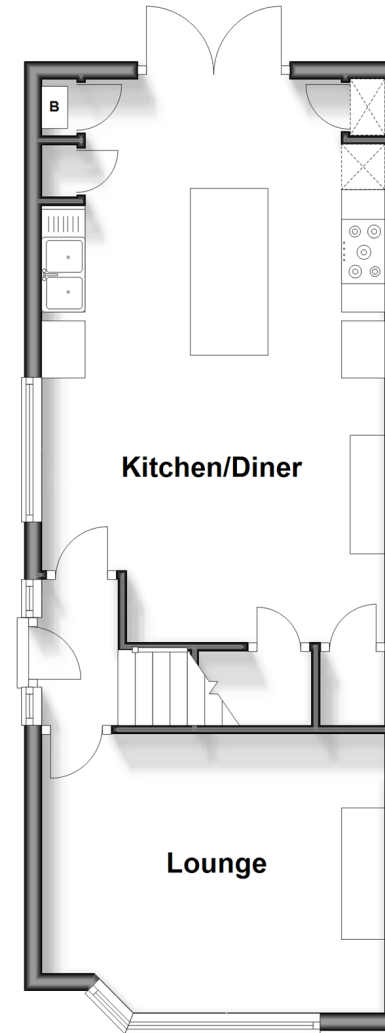
Front Garden

Rear Garden

Off Road Parking

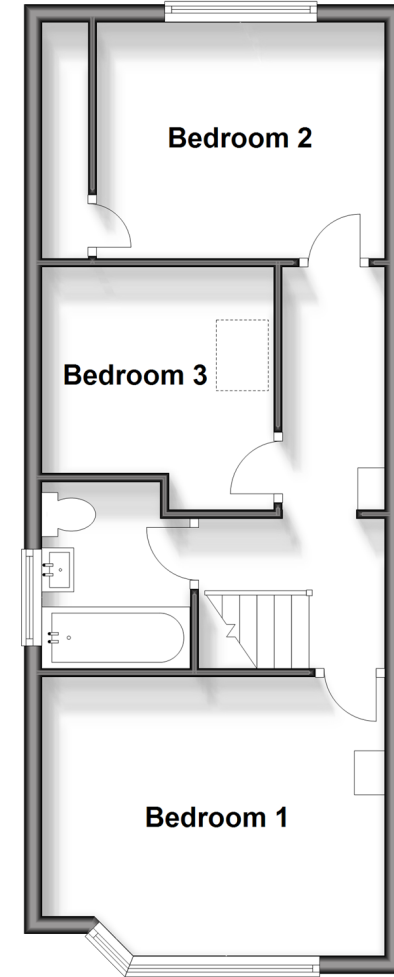
Ground Floor

Approx. 41.6 sq. metres (447.6 sq. feet)



First Floor

Approx. 41.6 sq. metres (447.6 sq. feet)



Call Dover - 01304 214876 ■ wardsforkent.co.uk

- Legal advice should be taken to verify fixtures/fittings, planning, alterations and/or lease details
- Appliances & services are untested, dimensions are approximate and floor plans are not to scale
- Through a Homewise Home For Life Plan people aged 60+ can secure this property for up to 59% less, by purchasing a Lifetime Lease.



10735753/20241012/MB/OV