



Price

£740,000

Freehold

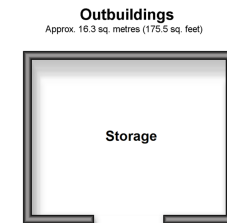
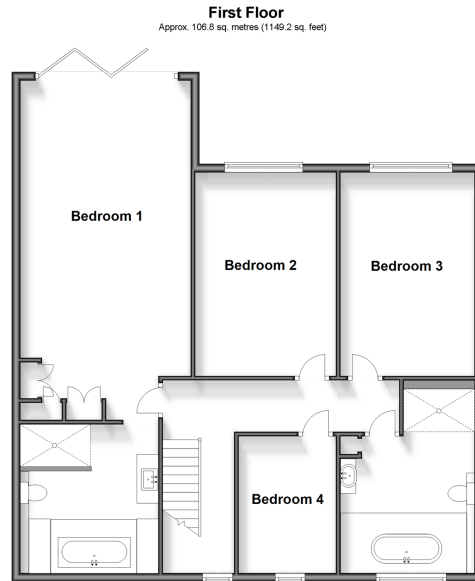
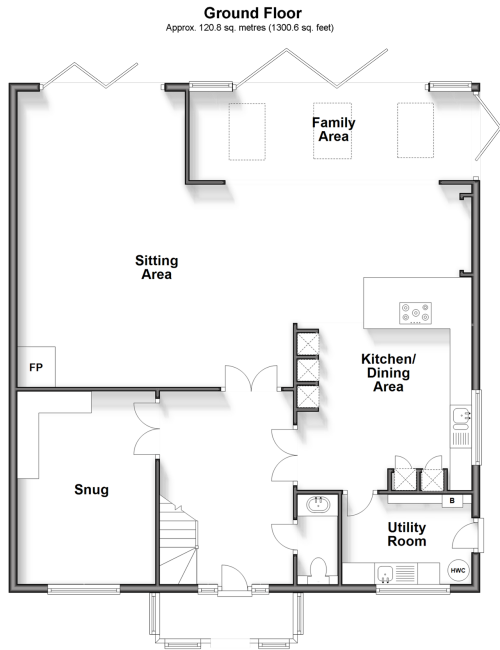
4x  2x  4x 

Chosen View,
Canterbury Road,
Lydden, Dover, Kent,
CT15

OVER 60?

Secure this property
for up to **59% less!**

Wards
Helping you move forwards



Accommodation

GROUND FLOOR

Entrance Lobby
 Entrance Hall : 14'7 x 10'2 (4.45m x 3.10m)
 Downstairs Cloakroom
 Kitchen/Dining Area : 24'2 x 13'5 (7.37m x 4.09m)
 Sitting Area : 22'6 (6.86m) narrowing to 13'0 (3.97m) x 21'3 (6.48m)
 Family Area: 22'0 x 6'8 (6.71m x 2.03m)
 Utility Room : 9'9 x 6'9 (2.97m x 2.06m)
 Snug : 14'8 x 10'6 (4.47m x 3.20m)

FIRST FLOOR

Landing
 Bedroom 1 : 26'8 (8.13m) narrowing to 12'9 (3.89m) x 22'8 (6.91m)
 En-Suite Bathroom : 11'4 x 9'8 (3.46m x 2.95m)
 Bedroom 2 : 16'6 x 10'9 (5.03m x 3.28m)
 Bedroom 3 : 16'6 x 10'9 (5.03m x 3.28m)
 Bedroom 4 : 10'5 x 7'5 (3.18m x 2.26m)
 Bathroom: 13'8 x 10'5 (4.17m x 3.18m)

OUTBUILDING

Carport

OUTBUILDING

Storage

OUTSIDE

Front Garden
 Rear Garden
 Side Garden
 Off Road Parking



Main features

- **Stunning family home**
- **Breathtaking views of rolling Kent countryside**
- **Large rooms throughout and en-suite bathroom to main bedroom**
- **Car port and driveway for multiple vehicles, ideal for when guests come to visit**
- **Lydden has quick access to A2/M2 with Folkestone, Canterbury, Deal and Dover towns close by**



Nearest Schools

Primary Schools: Lydden Primary 0.1 miles, Temple Ewell C of E Primary 1.4 miles, Sibertswold C of E Primary at Shepherdswell 1.4 miles
Secondary Schools: Dover Christchurch Academy 2.7 miles, Dover Grammar school for Boys 3.2 miles.

Transport Information

Train Stations: Kearsney 1.6 miles, Shepherdswell 1.7 miles, Dover Priory 3.8 miles

Address

Chosen View, Canterbury Road, Lydden, Dover, Kent, CT15

Directions

For directions to this property please contact us.





Wards
Helping you move forwards

Call Dover Branch 01304 214876 ■ wardsofkent.co.uk



■ If buying to let, the energy rating will need to be improved to at least 'E' rating before you can let the property
■ Appliances & services are untested, dimensions are approximate and floor plans are not to scale

■ Legal advice should be taken to verify fixtures/fittings, planning, alterations and/or lease details
■ Through a Homewise Home For Life Plan people aged 60+ can secure this property for up to 59% less, by purchasing a Lifetime Lease.

10734810/20240927/TE/OV