



Price

£250,000

Freehold

3x  1x  1x 

Mangers Lane, Dover,  
Kent, CT16

**OVER 60?**

Secure this property  
for up to **59% less!**

*Wards*  
Helping you move forwards



## Main features

- Large family home set in a sought-after location
- Ample off-road parking and garage, ideal for when guests descend
- Perfect home for the family to grow into
- Close to both River and Dover
- No onward chain complications

## Accommodation

### GROUND FLOOR

- Entrance Hallway
- Downstairs Cloakroom
- Kitchen: 14'2 x 8'9 (4.32m x 2.67m)
- Lounge : 16'0 x 9'11 (4.88m x 3.02m)

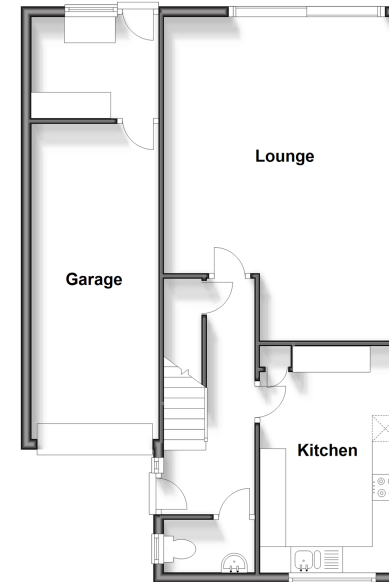
### FIRST FLOOR

- Landing
- Bathroom
- Bedroom 1 : 13'6 x 13'5 (4.12m x 4.09m)
- Bedroom 2 : 15'6 x 11'7 (4.73m x 3.53m)
- Bedroom 3 : 14'8 x 7'9 (4.47m x 2.36m)

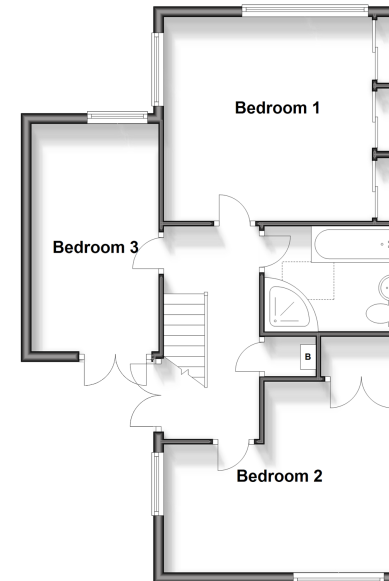
### OUTSIDE

- Front Garden
- Rear Garden
- Off Road Parking
- Garage

**Ground Floor**  
Approx. 69.1 sq. metres (744.2 sq. feet)



**First Floor**  
Approx. 59.6 sq. metres (641.3 sq. feet)



**Call Dover - 01304 214876 ■ [wardsof Kent.co.uk](http://wardsof Kent.co.uk)**

- Legal advice should be taken to verify fixtures/fittings, planning, alterations and/or lease details
- Appliances & services are untested, dimensions are approximate and floor plans are not to scale
- Through a Homewise Home For Life Plan people aged 60+ can secure this property for up to 59% less, by purchasing a Lifetime Lease.



10735732/20241005/TE/GM