



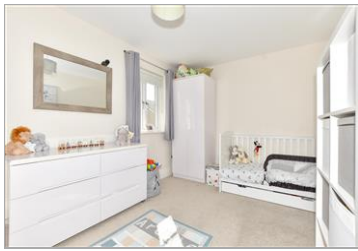
Price
£275,000

Freehold

2x  2x  1x 

**Barn Owl Way,
Whitfield, Dover, Kent,
CT16**

Wards
Helping you move forwards



Main features

- Family home with off road parking
- An ideal first run on the property ladder
- Easy to manage low maintenance rear garden
- Positioned in Richmond Park
- Beautifully presented home with downstairs cloakroom and en-suite to main bedroom

Accommodation

GROUND FLOOR

Entrance Hall
 Lounge/Diner: 21'9 x 11'2 (6.63m x 3.41m)
 Kitchen : 10'8 x 9'1 (3.25m x 2.77m)
 Utility Room : 7'5 x 5'2 (2.26m x 1.58m)
 Downstairs Cloakroom

FIRST FLOOR

Landing
 Bedroom 1 : 10'11 x 9'11 (3.33m x 3.02m)
 En-Suite Shower Room
 Bedroom 2 : 14'10 x 8'9 (4.52m x 2.67m)
 Bathroom : 8'2 x 6'5 (2.49m x 1.96m)

OUTSIDE

Front Garden
 Rear Garden
 Off Road Parking For 2 Cars

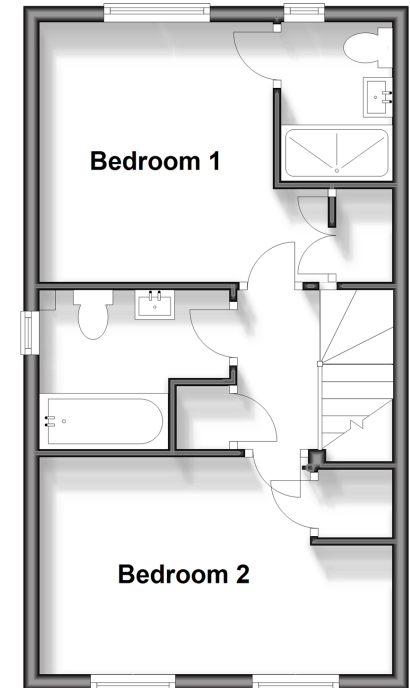
Ground Floor

Approx. 36.4 sq. metres (392.1 sq. feet)



First Floor

Approx. 36.4 sq. metres (392.1 sq. feet)



Call Dover - 01304 214876 ■ wardsofKent.co.uk

- Legal advice should be taken to verify fixtures/fittings, planning, alterations and/or lease details
- Appliances & services are untested, dimensions are approximate and floor plans are not to scale



10735317/20240924/TE/GM