



**Guide Price**  
**£300,000**

**Freehold**

4x  2x  1x 

**Harold Street, Dover,  
Kent, CT16**

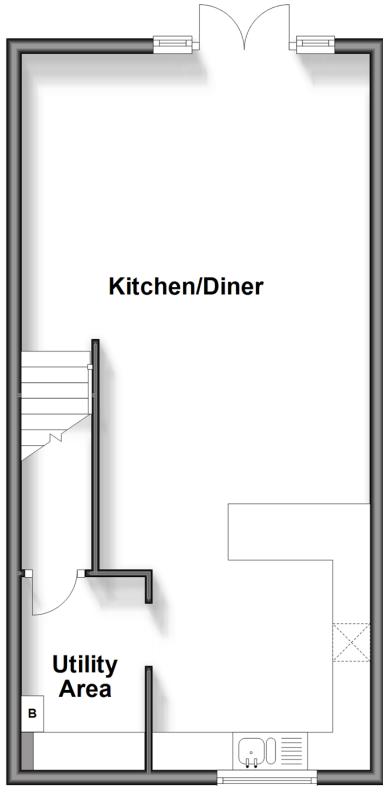
**OVER 60?**

Secure this property  
for up to **59% less!**

*Wards*  
Helping you move forwards

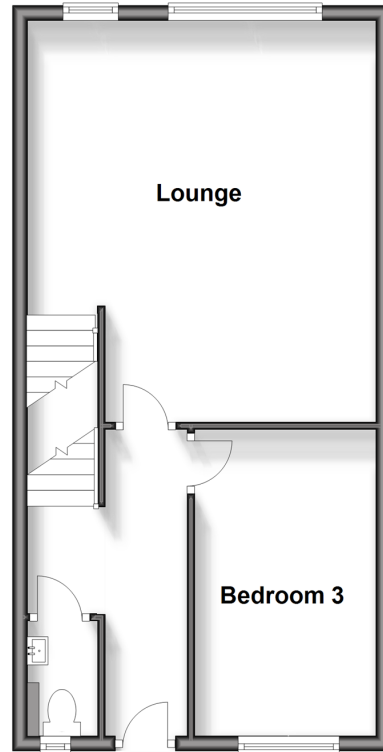
### Lower Ground Floor

Approx. 44.2 sq. metres (475.8 sq. feet)



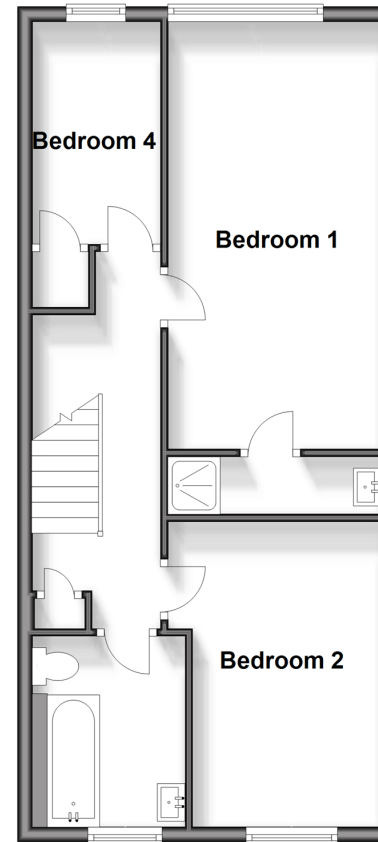
### Ground Floor

Approx. 44.2 sq. metres (475.8 sq. feet)



### First Floor

Approx. 49.7 sq. metres (535.0 sq. feet)



## Accommodation

### GROUND FLOOR

Entrance Hallway  
Downstairs Cloakroom  
Bedroom 3 : 13'1 x 7'10 (3.99m x 2.39m)  
Lounge : 17'5 x 15'1 (5.31m x 4.60m)

### LOWER GROUND FLOOR

Hallway  
Kitchen/Diner : 30'10 x 16'1 (9.40m x 4.91m)  
Utility Area : 6'2 x 5'3 (1.88m x 1.60m)

### FIRST FLOOR

Landing  
Bedroom 4 : 9'6 x 5'7 (2.90m x 1.70m)  
Bedroom 1 : 18'4 x 9'6 (5.59m x 2.90m)  
En-Suite Shower Room  
Bathroom : 8'7 x 7'7 (2.62m x 2.31m)  
Bedroom 2 : 13'0 x 8'2 (3.97m x 2.49m)

### OUTSIDE

Front Garden  
Rear Garden  
Garage



## Main features

- A town house ideal for a growing family
- Low maintenance rear garden
- Town location, with easy access to shops and cafe's, school and parks as well as transport links
- No onward chain complications, this could be yours sooner than you think
- Garage to the rear of the property



## Nearest Schools

Primary Schools: Dover, St Mary's C of E Primary 0.3 miles, St Richard's Catholic Primary 0.4 miles, Charlton C of E Primary 0.9 miles  
Secondary Schools: Dover Grammar School for Girls 0.7 miles, Dover College 0.8 miles.

## Transport Information

Train Stations: Dover Priory 0.9 miles, Kearsney 2.7 miles, Martin Mill 4.1 miles

## Address

Harold Street, Dover, Kent, CT16

## Directions

For directions to this property please contact us.



*Wards*  
Helping you move forwards

Call Dover Branch 01304 214876 ■ [wardsofkent.co.uk](http://wardsofkent.co.uk)



- Legal advice should be taken to verify fixtures/fittings, planning, alterations and/or lease details
- Appliances & services are untested, dimensions are approximate and floor plans are not to scale
- Through a Homewise Home For Life Plan people aged 60+ can secure this property for up to 59% less, by purchasing a Lifetime Lease.

EPC RATING

CURRENT: C(70) POTENTIAL: B(84)

10735605/20241002/TE/OV