



**Guide Price**  
**£220,000**

**Freehold**

2x  1x  1x 

**Limes Road, Dover,  
Kent, CT16**

**OVER 60?**

Secure this property  
for up to **59% less!**

*Wards*  
Helping you move forwards





## Main features

- Beautiful home set in central location
- Recently renovated throughout
- Ideal first time buy or buy to let investment property
- Close proximity to a variety of primary and secondary schools
- A real turn-key home

## Accommodation

### GROUND FLOOR

Entrance Hallway

Lounge/Diner : 25'5 x 10'10 (7.75m x 3.30m)

Kitchen : 10'8 x 8'6 (3.25m x 2.59m)

### FIRST FLOOR

Landing

Family Bathroom

Bedroom 1 : 13'8 x 12'2 (4.17m x 3.71m)

Bedroom 2 : 11'5 x 8'7 (3.48m x 2.62m)

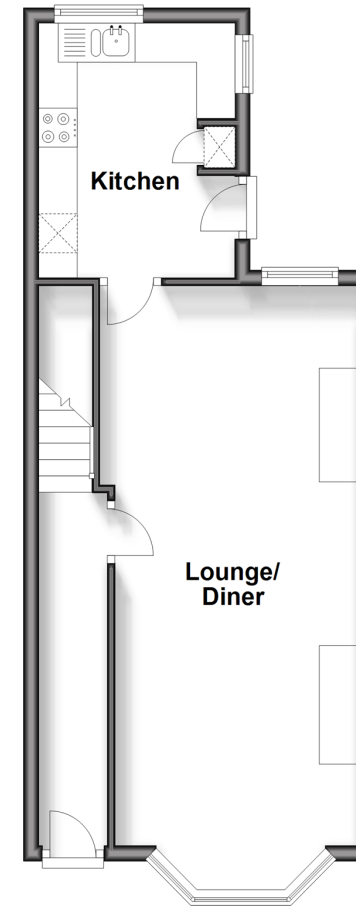
### OUTSIDE

Front Garden

Rear Garden

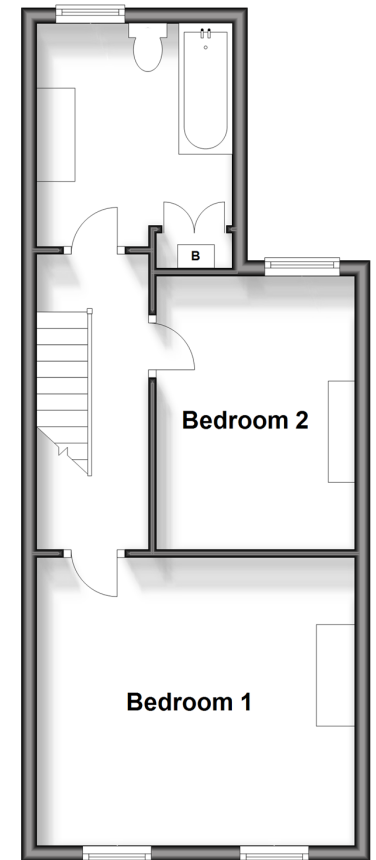
### Ground Floor

Approx. 38.7 sq. metres (416.5 sq. feet)



### First Floor

Approx. 38.6 sq. metres (415.2 sq. feet)



**Call Dover - 01304 214876 ■ [wardsof Kent.co.uk](http://wardsof Kent.co.uk)**

- Legal advice should be taken to verify fixtures/fittings, planning, alterations and/or lease details
- Appliances & services are untested, dimensions are approximate and floor plans are not to scale
- Through a Homewise Home For Life Plan people aged 60+ can secure this property for up to 59% less, by purchasing a Lifetime Lease.



10735700/20241010/GH/GM