



OVER 60?

Secure this property
for up to **59% less!**

Guide Price
£100,000

Leasehold

1x  1x  1x 

Avenue Road, Dover,
Kent, CT16

Wards
Helping you move forwards



Main features

- Lower ground floor flat with added benefit of a garden
- In the heart of town, close to shops
- Ideal first time purchase, or buy to let opportunity
- Dover has a direct high speed rail link to London
- Please note. maintenance is 40% share of anything that arises

Accommodation

LOWER GROUND FLOOR

Entrance Area

Lounge : 16'3 x 12'3 (4.96m x 3.74m)

Kitchen: 12'5 x 5'3 (3.79m x 1.60m)

Bedroom : 14'4 x 10'1 (4.37m x 3.08m)

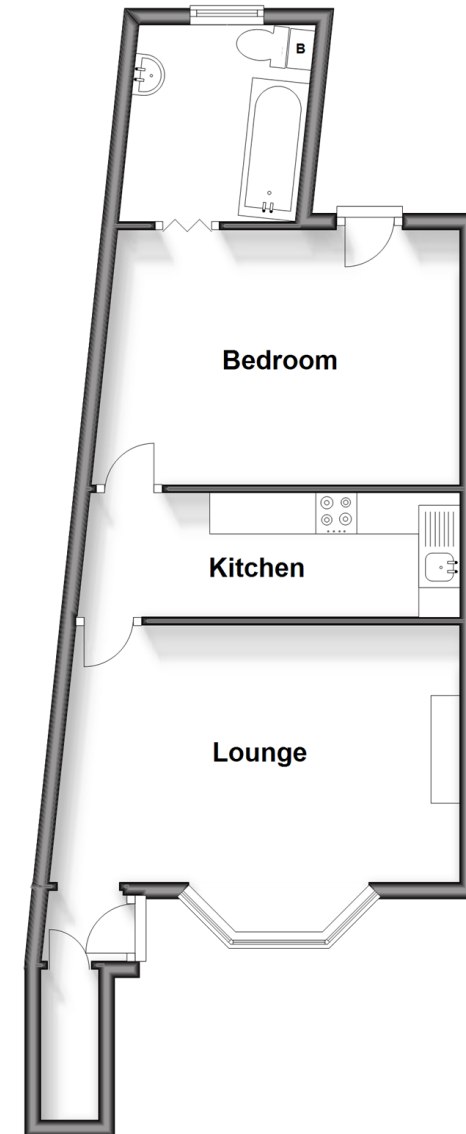
Bathroom

OUTSIDE

Courtyard Rear Garden

Lower Ground Floor

Approx. 44.3 sq. metres (476.7 sq. feet)



Call Dover - 01304 214876 ■ wardsof Kent.co.uk

- Legal advice should be taken to verify fixtures/fittings, planning, alterations and/or lease details
- Appliances & services are untested, dimensions are approximate and floor plans are not to scale
- Through a Homewise Home For Life Plan people aged 60+ can secure this property for up to 59% less, by purchasing a Lifetime Lease.



10735695/20240904/SB/OV