



**Price**  
**£215,000**

**Freehold**

3x  1x  1x 

**Fulbert Road, Dover,  
Kent, CT16**

**OVER 60?**

Secure this property  
for up to **59% less!**

*Wards*  
Helping you move forwards





## Main features

- A lovely family home
- Ideal first-time purchase or buy to let opportunity
- Close to schools and selection of shops including supermarkets
- Low maintenance rear garden with stunning views across Dover Downs
- Fantastic access to the A2/M2, A20/M20 and Dover Priory Railway Station with its fast links to London

## Accommodation

### GROUND FLOOR

Porch  
Hallway  
Lounge: 14'5 x 10'6 (4.40m x 3.20m)  
Kitchen: 8'9 x 8'3 (2.67m x 2.52m) plus 7'1 x 8'8 (2.16m x 2.64m)

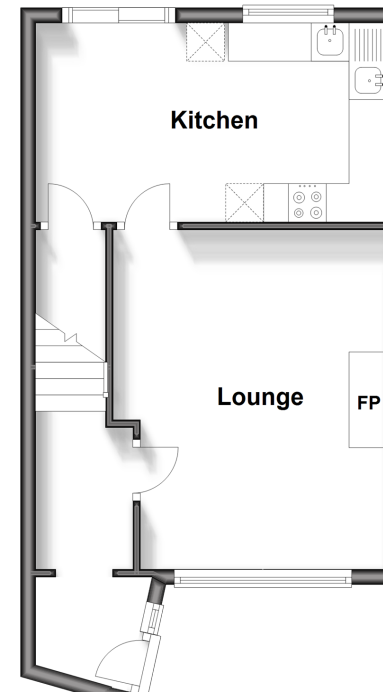
### FIRST FLOOR

Landing  
Bedroom 1: 11'2 x 8'7 (3.41m x 2.62m)  
Bedroom 2: 12'6 x 7'6 (3.81m x 2.29m)  
Bedroom 3: 9'7 x 7'5 (2.92m x 2.26m)  
Bathroom

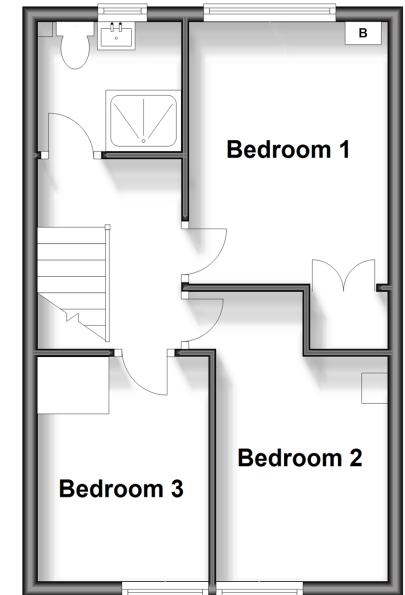
### OUTSIDE

Front & Rear Gardens

**Ground Floor**  
Approx. 33.6 sq. metres (361.3 sq. feet)



**First Floor**  
Approx. 34.0 sq. metres (366.3 sq. feet)



**Call Dover - 01304 214876 ■ [wardsof Kent.co.uk](http://wardsof Kent.co.uk)**

■ Legal advice should be taken to verify fixtures/fittings, planning, alterations and/or lease details  
■ Through a Homewise Home For Life Plan people aged 60+ can secure this property for up to 59% less, by purchasing a Lifetime Lease.

■ Appliances & services are untested, dimensions are approximate and floor plans are not to scale



10735613/20240925/GM/OV