



Guide Price
£275,000

Leasehold

2x  2x  1x 

**Bushy Ruff House,
Alkham Road, Temple
Ewell, Dover, Kent, CT16**

OVER 60?

Secure this property
for up to **59% less!**

Wards
Helping you move forwards



Main features

- Grade II listed period property
- Breathtaking viewings across Bushy Ruff nature reserve
- Gated development with allocated parking
- Walking distance to Kearsney train station
- Great access to A20/M20 making it ideal for commuters

Accommodation

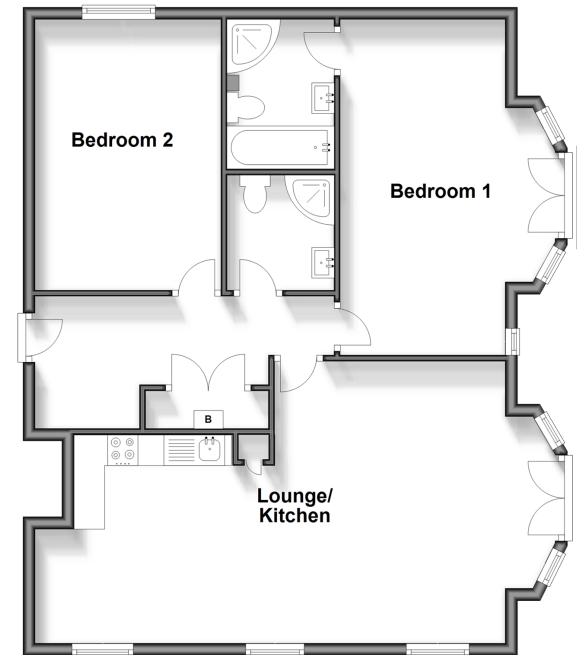
FIRST FLOOR

- Entrance Hallway
- Lounge/Kitchen: 28'6 x 15'8 (8.69m x 4.78m)
- Juliet Balcony
- Bedroom 1 : 17'9 x 12'6 (5.41m x 3.81m)
- Juliet Balcony
- En-Suite Shower Room
- Bathroom
- Bedroom 2 : 15'4 x 10'5 (4.68m x 3.18m)

OUTSIDE

- Allocated Parking

First Floor
Approx. 81.9 sq. metres (881.9 sq. feet)



Call Dover - 01304 214876 ■ wardsofkent.co.uk

- Legal advice should be taken to verify fixtures/fittings, planning, alterations and/or lease details
- Through a Homewise Home For Life Plan people aged 60+ can secure this property for up to 59% less, by purchasing a Lifetime Lease.

- Appliances & services are untested, dimensions are approximate and floor plans are not to scale



10735637/20241106/TE/CB