

OVER 60?

Secure this property
for up to **59% less!**



Price

£280,000

Leasehold

2x  1x  1x 

The Gateway, Dover, Kent, CT16

Wards

Helping you move forwards



Main features

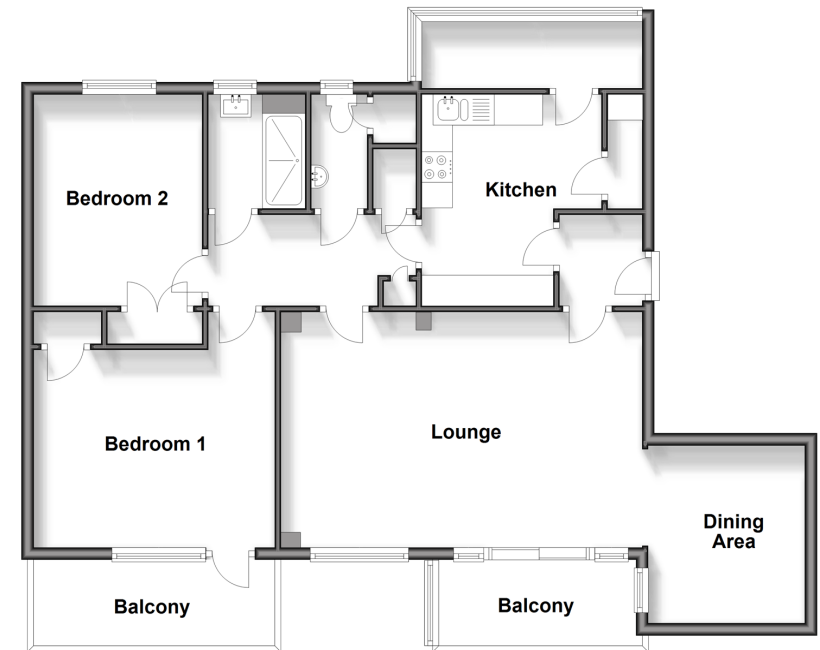
- 3rd floor apartment in the sought after Gateway development
- 2 balconies, ideal for seeing the sun dance on the sea
- Additional space used as a dining area
- Stunning views across the English Channel
- Close to shops

Accommodation

THIRD FLOOR

- Entrance Hallway
- Lounge : 19'4 x 12'2 (5.90m x 3.71m)
- Balcony 1
- Dining Area: 9'4 x 8'3 (2.85m x 2.52m)
- Kitchen: 11'2 x 9'4 (3.41m x 2.85m)
- Utility Area : 10'6 x 3'4 (3.20m x 1.02m)
- Cloakroom
- Shower Room
- Bedroom 2: 11'6 x 9'1 (3.51m x 2.77m)
- Bedroom 1 : 12'8 x 12'8 (3.86m x 3.86m)
- Balcony 2
- Bathroom

Third Floor
Approx. 85.4 sq. metres (918.9 sq. feet)



Call Dover - 01304 214876 ■ wardsofkent.co.uk

- Legal advice should be taken to verify fixtures/fittings, planning, alterations and/or lease details
- Through a Homewise Home For Life Plan people aged 60+ can secure this property for up to 59% less, by purchasing a Lifetime Lease.

- Appliances & services are untested, dimensions are approximate and floor plans are not to scale



10735644/20240719/TE/OV