



Guide Price
£150,000

**Share of
Freehold**

2x  1x  1x 

**Stuart Court, Priory Gate
Road, Dover, Kent, CT17**

OVER 60?

Secure this property
for up to **59% less!**

Wards
Helping you move forwards



Main features

- **Second floor apartment**
- **Residents parking**
- **Ideal buy to let investment or first time buy**
- **Close to Dover town & Dover mainline railway station with its fast links to London**
- **Dover has easy access to A2/M2 and A20/M20**

Accommodation

SECOND FLOOR

Entrance Hallway

Lounge/Diner: 13'11 x 10'3 (4.24m x 3.13m)

Kitchen : 10'3 x 7'11 (3.13m x 2.41m)

Bedroom 1 : 14'0 x 9'3 (4.27m x 2.82m)

Bedroom 2 : 9'3 x 7'11 (2.82m x 2.41m)

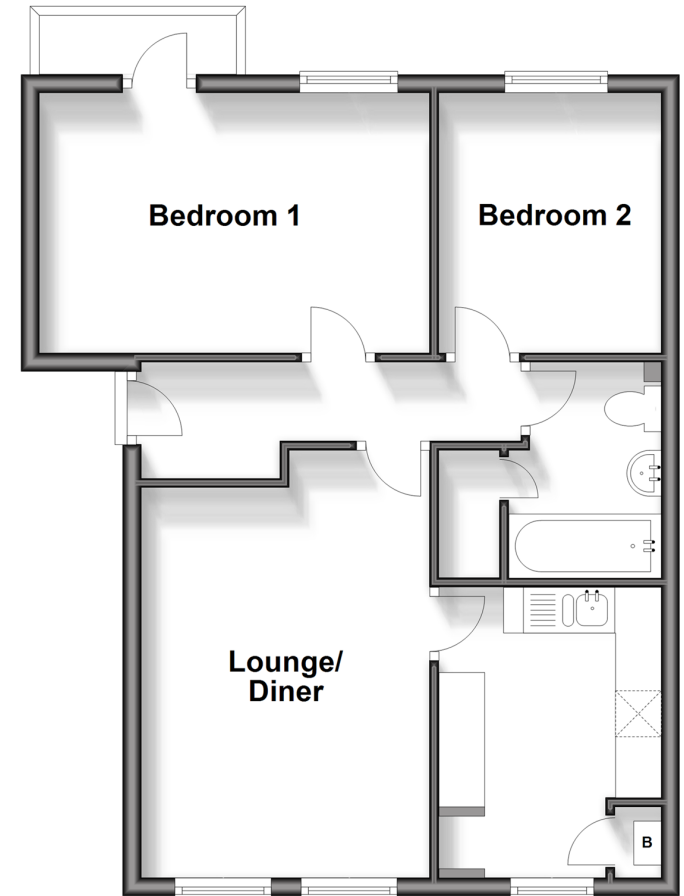
Bathroom: 7'9 x 5'5 (2.36m x 1.65m)

OUTSIDE

Residents Parking

Second Floor

Approx. 51.9 sq. metres (558.9 sq. feet)



Call Dover - 01304 214876 ■ wardsof Kent.co.uk

- Legal advice should be taken to verify fixtures/fittings, planning, alterations and/or lease details
- Appliances & services are untested, dimensions are approximate and floor plans are not to scale
- Through a Homewise Home For Life Plan people aged 60+ can secure this property for up to 59% less, by purchasing a Lifetime Lease.



10734043/20240731/TE/OV