



Guide Price
£205,000

Leasehold

2x  1x  1x 

**Cambridge Terrace,
Dover, Kent, CT16**

OVER 60?

Secure this property
for up to **59% less!**

Wards
Helping you move forwards



Main features

- Stunning top floor duplex apartment in a sought-after development
- Both residents and visitors parking
- Stunning communal garden
- No onward chain complications, meaning this could be yours sooner than you think
- Only a short walk to the stunning Dover Marina and Dover town centre

Accommodation

SECOND FLOOR

Entrance Hall

Lounge : 14'6 x 11'1 (4.42m x 3.38m)

Kitchen : 12'3 x 11'5 (3.74m x 3.48m)

Useful Storage Cupboard

THIRD FLOOR

Landing

Family Bathroom : 12'0 x 7'8 (3.66m x 2.34m)

Bedroom 1 : 14'7 x 11'3 (4.45m x 3.43m)

Bedroom 2 : 12'0 x 11'8 (3.66m x 3.56m)

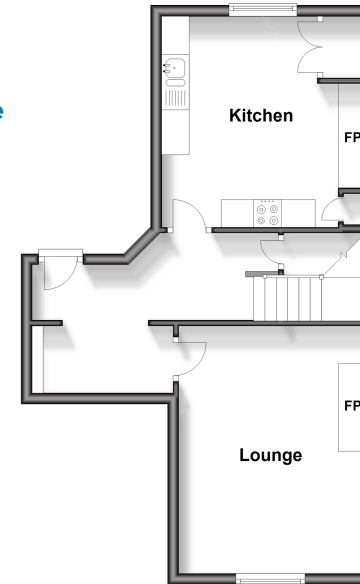
OUTSIDE

Communal Garden

Residents and Visitors Parking

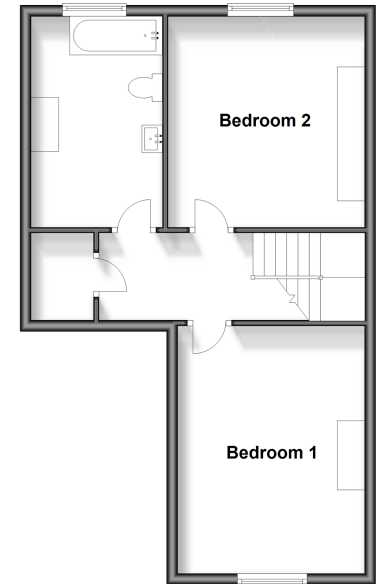
Second Floor

Approx. 41.9 sq. metres (451.3 sq. feet)



Third Floor

Approx. 48.8 sq. metres (525.3 sq. feet)



Call Dover - 01304 214876 ■ wardsofkent.co.uk

- Legal advice should be taken to verify fixtures/fittings, planning, alterations and/or lease details
- Appliances & services are untested, dimensions are approximate and floor plans are not to scale
- Through a Homewise Home For Life Plan people aged 60+ can secure this property for up to 59% less, by purchasing a Lifetime Lease.



10735630/20241001/SB/GM