



OVER 60?

Secure this property
for up to **59% less!**

Price

£160,000

Freehold

2x  1x  1x 

**Clarendon Place, Dover,
Kent, CT17**

Wards
Helping you move forwards



Main features

- **Period property**
- **Ready made buy to let or potential first time purchase**
- **No onward chain complications**
- **Close to Dover Priory railway station with the high speed rail link to London, making commuting to the City ideal**
- **Versatile accommodation**

Accommodation

SPLIT LEVEL GROUND FLOOR

Entrance Lobby Area

Lounge/Diner : 22'3 x 12'1 (6.79m x 3.69m)

Kitchen : 9'1 x 6'9 (2.77m x 2.06m)

Bathroom : 8'2 x 5'3 (2.49m x 1.60m)

FIRST FLOOR

Landing

Bedroom 1 : 12'3 x 9'4 (3.74m x 2.85m)

Bedroom 2 : 11'1 x 9'8 (3.38m x 2.95m)

Bedroom 3 : 9'0 x 7'0 (2.75m x 2.14m)

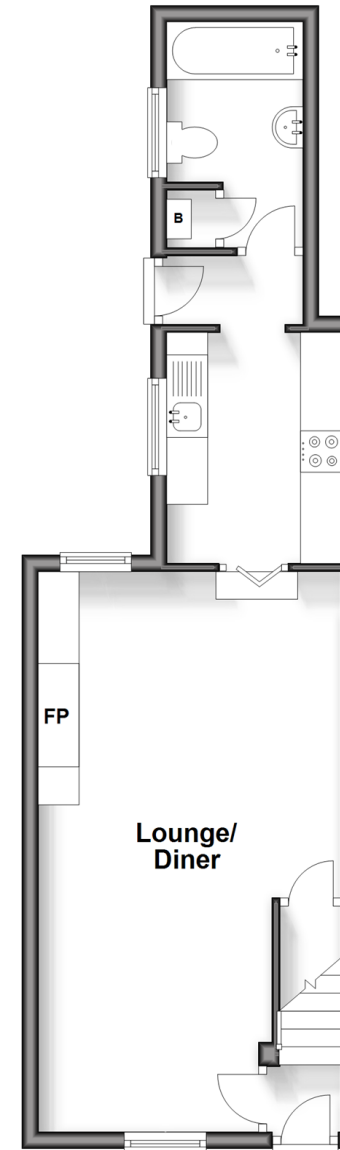
OUTSIDE

Front Garden

Rear Garden

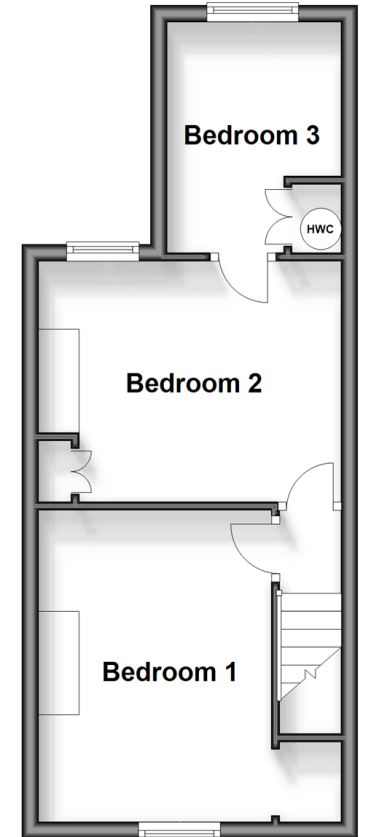
Split Level Ground Floor

Approx. 37.6 sq. metres (404.9 sq. feet)



First Floor

Approx. 31.4 sq. metres (337.5 sq. feet)



Call Dover - 01304 214876 ■ wardsof Kent.co.uk

- Legal advice should be taken to verify fixtures/fittings, planning, alterations and/or lease details
- Appliances & services are untested, dimensions are approximate and floor plans are not to scale
- Through a Homewise Home For Life Plan people aged 60+ can secure this property for up to 59% less, by purchasing a Lifetime Lease.



10733112/20240724/SB/OV