



Guide Price
£220,000

Freehold

3x  1x  1x 

Colton Crescent, Dover,
Kent, CT16

OVER 60?

Secure this property
for up to **59% less!**

Wards
Helping you move forwards



Main features

- Ideal first time buy
- Low maintenance rear garden, ideal for children or pets
- Off road parking to the rear
- Ideal home for a growing family
- Fantastic views to the front of the property, over the English Channel

Accommodation

Entrance Porch
 Entrance Hallway
 Kitchen : 8'9 x 7'4 (2.67m x 2.24m)
 Lounge/Diner : 24'0 (7.32m) narrowing to 8'8 (2.64m) x 10'8 (3.25m)

FIRST FLOOR

Landing
 Shower Room
 Bedroom 1 : 13'9 x 9'9 (4.19m x 2.97m)
 Bedroom 2 : 11'7 x 10'10 (3.53m x 3.30m)
 Bedroom 3 : 9'9 x 6'9 (2.97m x 2.06m)

OUTBUILDING

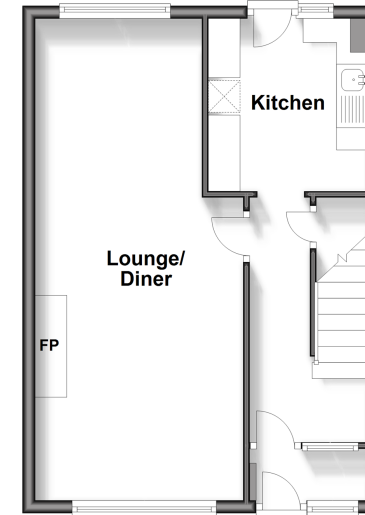
Workshop

OUTSIDE

Front Garden
 Rear Garden
 Off Road Parking To The Rear

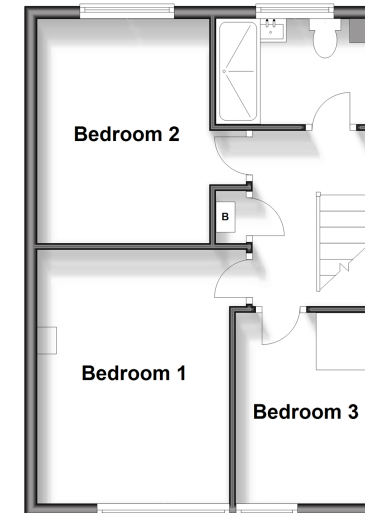
Ground Floor

Approx. 39.9 sq. metres (429.3 sq. feet)



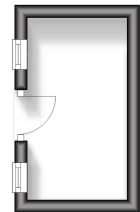
First Floor

Approx. 40.2 sq. metres (432.6 sq. feet)



Outbuilding

Approx. 4.5 sq. metres (48.7 sq. feet)



Call Dover - 01304 214876 ■ wardsof Kent.co.uk

- Legal advice should be taken to verify fixtures/fittings, planning, alterations and/or lease details
- Appliances & services are untested, dimensions are approximate and floor plans are not to scale
- Through a Homewise Home For Life Plan people aged 60+ can secure this property for up to 59% less, by purchasing a Lifetime Lease.



10735593/20240605/SB/GM