



**Price**  
**£254,995**

**Freehold**

2x  2x  1x 

**Richmond Way,  
Whitfield, Dover, Kent,  
CT16**

*Wards*  
Helping you move forwards



## Main features

- Beautifully presented family house
- Family bathroom and en-suite shower room
- Off road parking for 2 cars
- Sought after Richmond Park location in the village of Whitfield with easy access to Motorways
- Ideal first time purchase with easy to manage garden

## Accommodation

### GROUND FLOOR

Entrance Hallway  
 Downstairs Cloakroom  
 Lounge : 16'7 x 9'7 (5.06m x 2.92m)  
 Kitchen: 13'3 x 9'7 (4.04m x 2.92m)

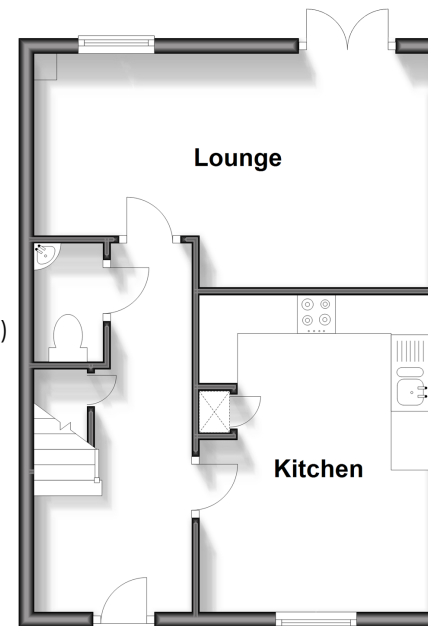
### FIRST FLOOR

Landing  
 Bedroom 1 : 16'7 x 9'2 (5.06m x 2.80m)  
 En-Suite Shower Room  
 Family Bathroom  
 Bedroom 2 : 10'2 x 9'3 (3.10m x 2.82m)

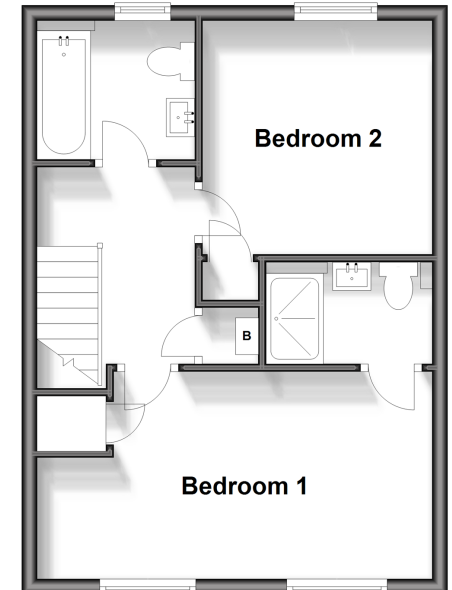
### OUTSIDE

Front Garden  
 Rear Garden  
 Garden Shed  
 Parking To The Rear For 2 Cars

**Ground Floor**  
 Approx. 37.6 sq. metres (405.3 sq. feet)



**First Floor**  
 Approx. 37.6 sq. metres (405.3 sq. feet)



**Call Dover - 01304 214876 ■ [wardsofkent.co.uk](http://wardsofkent.co.uk)**

- Legal advice should be taken to verify fixtures/fittings, planning, alterations and/or lease details
- Appliances & services are untested, dimensions are approximate and floor plans are not to scale



10735583/20240925/CH1/OV