



Price
£600,000

Freehold

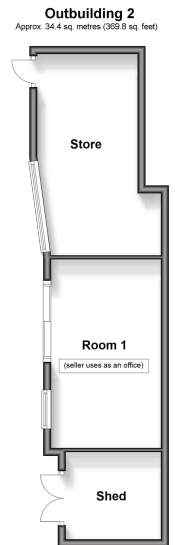
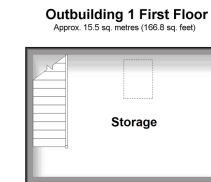
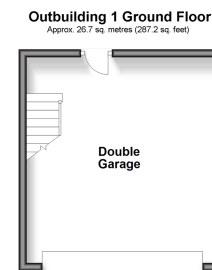
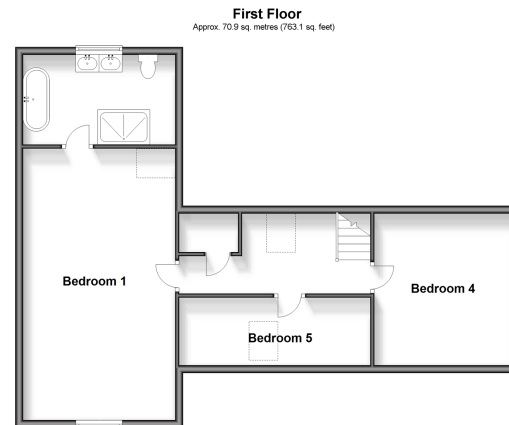
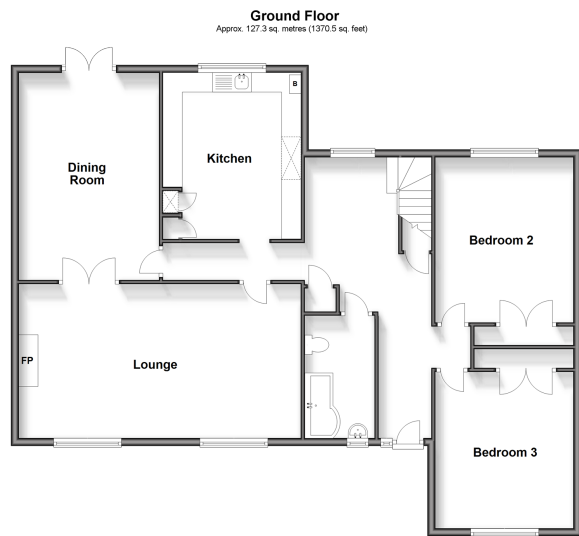
5x  2x  2x 

**Lenacre Lane, Whitfield,
Dover, Kent, CT16**

OVER 60?

Secure this property
for up to **59% less!**

Wards
Helping you move forwards



Accommodation

GROUND FLOOR

Entrance Hallway
 Bathroom : 12'3 x 5'9 (3.74m x 1.75m)
 Bedroom 2 : 13'1 x 11'10 (3.99m x 3.61m)
 Bedroom 3 : 13'1 x 11'10 (3.99m x 3.61m)
 Lounge : 23'11 x 13'1 (7.29m x 3.99m)
 Dining Room : 17'9 x 11'2 (5.41m x 3.41m)
 Kitchen : 14'1 x 11'6 (4.30m x 3.51m)

FIRST FLOOR

Landing
 Bedroom 1 : 23'0 x 12'10 (7.02m x 3.91m)
 En-Suite Bathroom
 Bedroom 5 : 16'2 x 5'9 (4.93m x 1.75m)
 Bedroom 4 : 12'10 x 12'0 (3.91m x 3.66m)

OUTBUILDING 1 - GROUND FLOOR

Double Garage

OUTBUILDING 1 - FIRST FLOOR

Storage

OUTBUILDING 2

Store
 Room 1 (Seller uses as office)
 Shed

OUTSIDE

Front And Rear Gardens
 Plenty Of Driveway Parking



Main features

- **Stunning family house**
- **Off road parking for number of cars as well as large double garage**
- **Located in the old part of the quiet rural village of Whitfield**
- **Ideal location if you commute with easy access to A256/A2/M2**
- **Dover and Kearsney train stations are close by, both benefit from the high speed rail links**

Nearest Schools

Primary Schools: Whitfield and Aspen School 0.4 miles, Temple Ewell C of E Primary 1.1 miles, Green Park Community Primary 1.3 miles
Secondary Schools: Dover Christchurch Academy 1.0 miles, St Edmund's Catholic School 2.1 miles.

Transport Information

Train Stations: Kearsney 1.8 miles, Dover Priory 3.8 miles, Martin Mill 4.9 miles, Walmer 4.9 miles

Address

Lenacre Lane, Whitfield, Dover, Kent, CT16

Directions

For directions to this property please contact us.



Wards
Helping you move forwards

Call Dover Branch 01304 214876 ■ wardsofkent.co.uk



- Legal advice should be taken to verify fixtures/fittings, planning, alterations and/or lease details
- Appliances & services are untested, dimensions are approximate and floor plans are not to scale
- Through a Homewise Home For Life Plan people aged 60+ can secure this property for up to 59% less, by purchasing a Lifetime Lease.



10723009/20240425/TE/OV