



Guide Price
£400,000

Freehold

3x  2x  2x 

**Cherry Waye, Eythorne,
Dover, Kent, CT15**

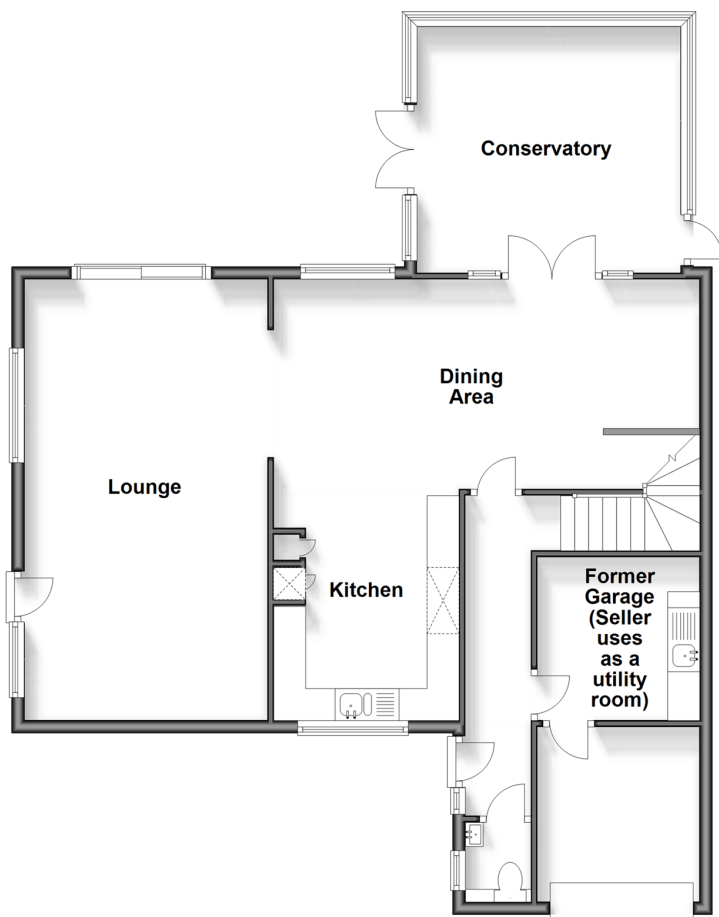
OVER 60?

Secure this property
for up to **59% less!**

Wards
Helping you move forwards

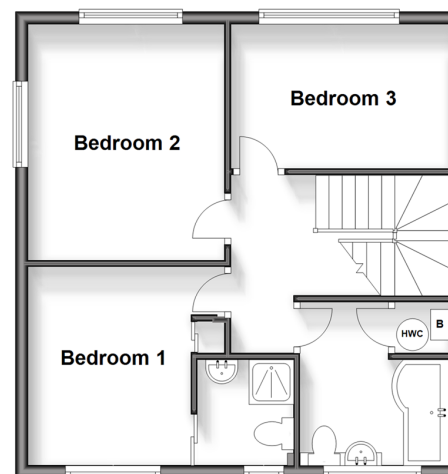
Ground Floor

Approx. 99.6 sq. metres (1071.8 sq. feet)



First Floor

Approx. 45.5 sq. metres (489.8 sq. feet)



Accommodation

GROUND FLOOR

Entrance Hallway

Lounge : 21'10 x 13'1 (6.66m x 3.99m)

Dining Area : 23'7 x 11'3 (7.19m x 3.43m)

Kitchen : 11'6 x 9'3 (3.51m x 2.82m)

Conservatory : 13'7 x 12'9 (4.14m x 3.89m)

Downstairs Cloakroom

FIRST FLOOR

Landing

Bedroom 1: 12'0 x 10'4 (3.66m x 3.15m)

En-Suite Shower Room

Bedroom 2: 10'5 x 10'5 (3.18m x 3.18m)

Bedroom 3 : 11'1 x 7'6 (3.38m x 2.29m)

Bathroom

OUTSIDE

Front Garden

Side Garden

Rear Garden

Shed

Former Integral Garage
(Seller uses as utility room)

Driveway Parking



Main features

- Extended family house on a corner plot
- Garage and off road parking for a number of cars
- Sought after village of Eythorne with pub and village shop
- Excellent transport links with easy access to the A256 and A2
- Lovely wrap around garden



Nearest Schools

Primary Schools: Eythorne Elvington Community Primary 1.2 miles, Sibertswold C of E Primary at Shepherdswell 2.9 miles, Lydden Primary 3.3 miles
Secondary Schools: Dover Christchurch Academy 4.4 miles, Dover Grammar School for Boys 4.7 miles.



Transport Information

Train Stations: Shepherdswell 2.7 miles, Kearsney 4.9 miles, Martin Mill 4.9 miles



Address

Cherry Waye, Eythorne, Dover, Kent, CT15



Directions

For directions to this property please contact us.



Wards
Helping you move forwards

Call Dover Branch 01304 214876 ■ wardsofkent.co.uk



- Legal advice should be taken to verify fixtures/fittings, planning, alterations and/or lease details
- Through a Homewise Home For Life Plan people aged 60+ can secure this property for up to 59% less, by purchasing a Lifetime Lease.
- Appliances & services are untested, dimensions are approximate and floor plans are not to scale



10735456/20240321/OV/OV