



Guide Price
£240,000

Freehold

3x  1x  1x 

**Nightingale Road,
Dover, Kent, CT16**

OVER 60?

Secure this property
for up to **59% less!**

Wards
Helping you move forwards



Main features

- Period property
- Easy to manage low maintenance rear garden
- Close to Dover town with shops and schools close by
- No onward chain complications
- Still retains original features with fireplace and original cornice

Accommodation

GROUND FLOOR

Entrance Hallway

Lounge : 13'7 x 10'8 (4.14m x 3.25m)

Kitchen/Diner : 11'6 x 11'4 (3.51m x 3.46m)

Inner Hall

Bathroom : 8'8 x 8'7 (2.64m x 2.62m)

FIRST FLOOR

Landing

Bedroom 3 : 11'8 x 9'1 (3.56m x 2.77m)

Bedroom 2 : 11'7 x 8'9 (3.53m x 2.67m)

Bedroom 1 : 14'4 x 11'3 (4.37m x 3.43m)

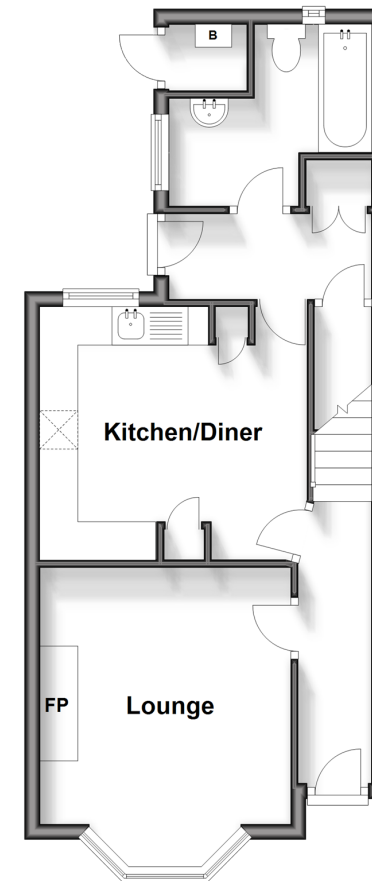
OUTSIDE

Front Garden

Rear Garden

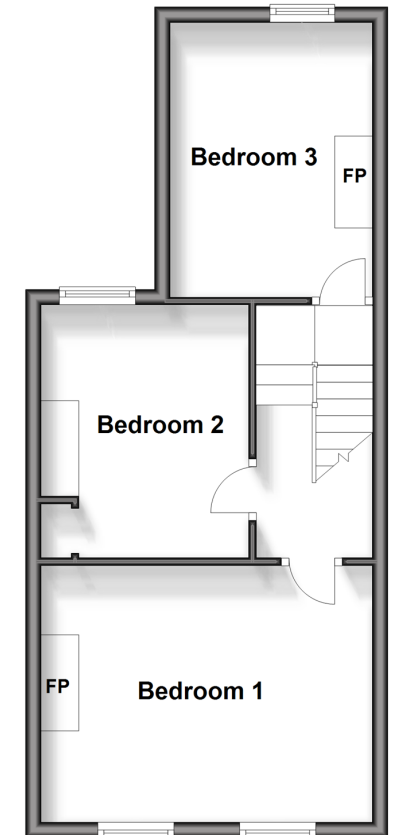
Ground Floor

Approx. 38.9 sq. metres (418.9 sq. feet)



First Floor

Approx. 40.0 sq. metres (430.1 sq. feet)



Call Dover - 01304 214876 ■ wardsof Kent.co.uk

- Legal advice should be taken to verify fixtures/fittings, planning, alterations and/or lease details
- Appliances & services are untested, dimensions are approximate and floor plans are not to scale
- Through a Homewise Home For Life Plan people aged 60+ can secure this property for up to 59% less, by purchasing a Lifetime Lease.



10727033/20240302/TE/OV