



**Guide Price**  
**£450,000**

**Freehold**

4x  1x  3x 

**Greenwich Lane, Ewell**  
**Minnis, Dover, Kent,**  
**CT15**

**OVER 60?**

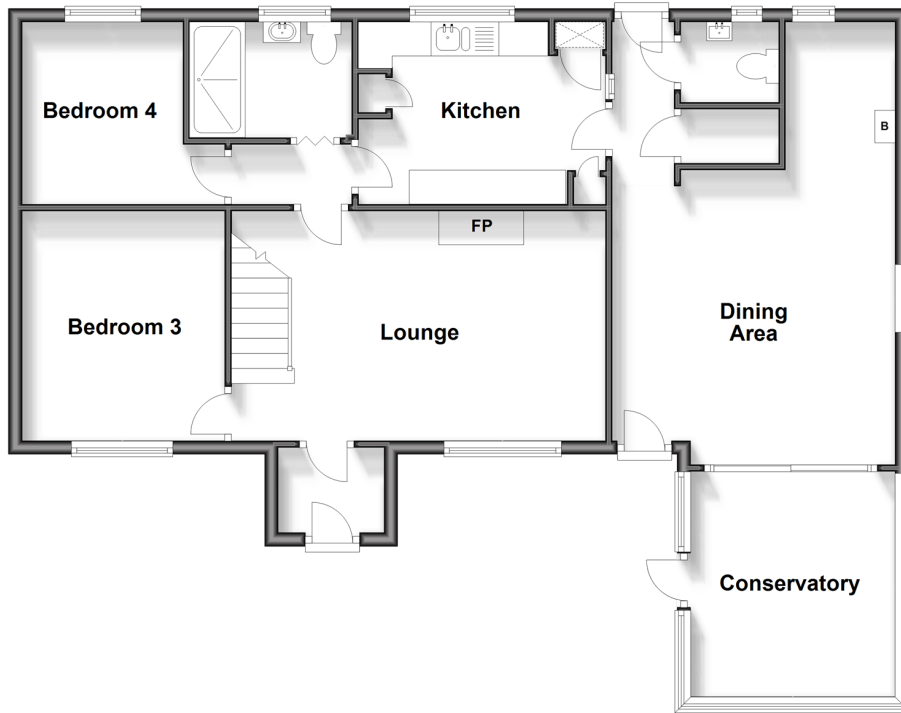
Secure this property  
for up to **59% less!**

*Wards*  
Helping you move forwards



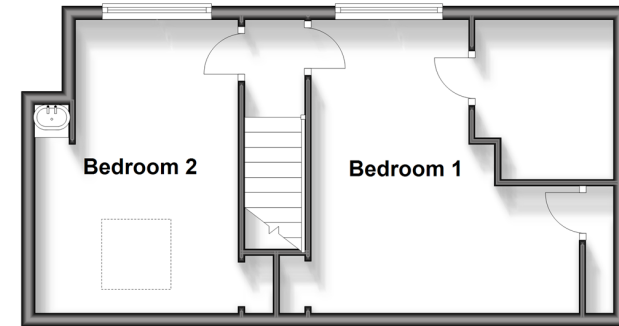
## Ground Floor

Approx. 92.9 sq. metres (1000.1 sq. feet)



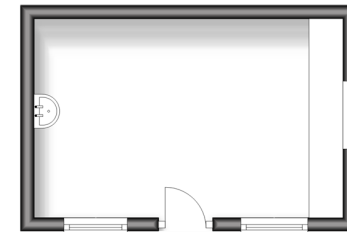
## First Floor

Approx. 36.2 sq. metres (389.1 sq. feet)



## Outbuilding

Approx. 13.4 sq. metres (143.7 sq. feet)



## Accommodation

### GROUND FLOOR

Entrance Porch  
Lounge : 18'2 x 11'10 (5.54m x 3.61m)  
Bedroom 3 : 11'11 x 9'11 (3.63m x 3.02m)  
Bedroom 4 : 9'11 x 8'11 (3.02m x 2.72m)  
Shower Room  
Kitchen : 11'11 x 8'11 (3.63m x 2.72m)  
Downstairs Cloakroom  
Dining Area: 19'9 x 13'8 (6.02m x 4.17m)  
Conservatory : 10'11 x 9'8 (3.33m x 2.95m)

### FIRST FLOOR

Landing  
Bedroom 1 : 14'3 x 11'11 (4.35m x 3.63m)  
Bedroom 2 : 14'3 x 10'0 (4.35m x 3.05m)

### OUTBUILDING

Outbuilding

### OUTSIDE

Front Garden  
Rear Garden  
Off Road Parking



## Main features

- Large family house set in a desirable location
- Ample off-road parking, ideal for when the guest descend
- Large private rear garden, perfect during the summer months
- Beautifully presented throughout
- Great access to both Folkestone and Dover along the Alkham Valley Road



### Nearest Schools

Primary Schools: Lydden Primary 1.2 miles, Temple Ewell C of E Primary 1.7 miles, River Primary 1.9 miles  
Secondary Schools: The Old School 2.5 miles, Harbour School 2.6 miles, Astor College for the Arts 2.9 miles.



### Transport Information

Train Stations: Kearsney 1.8 miles, Shepherdswell 2.8 miles, Dover Priory 3.6 miles



### Address

Greenwich Lane, Ewell Minnis, Dover, Kent, CT15



### Directions

For directions to this property please contact us.



