



**Guide Price**  
**£300,000**

**Freehold**

3x  2x  2x 

**Richmond Way,  
Whitfield, Dover, Kent,  
CT16**

**OVER 60?**

Secure this property  
for up to **59% less!**

*Wards*  
Helping you move forwards





## Main features

- Located in the sought after Richmond Park development in Whitfield
- No onward chain complications
- Ideal for commuting with easy access to A256 & A2/M2
- Close to local primary schools
- A lovely family house with en-suite shower room to the main bedroom

## Accommodation

### GROUND FLOOR

Entrance Hallway  
 Study : 7'7 x 5'2 (2.31m x 1.58m)  
 Downstairs Cloakroom  
 Kitchen: 14'6 x 9'2 (4.42m x 2.80m)  
 Lounge/Diner: 18'9 x 10'9 (5.72m x 3.28m)

### FIRST FLOOR

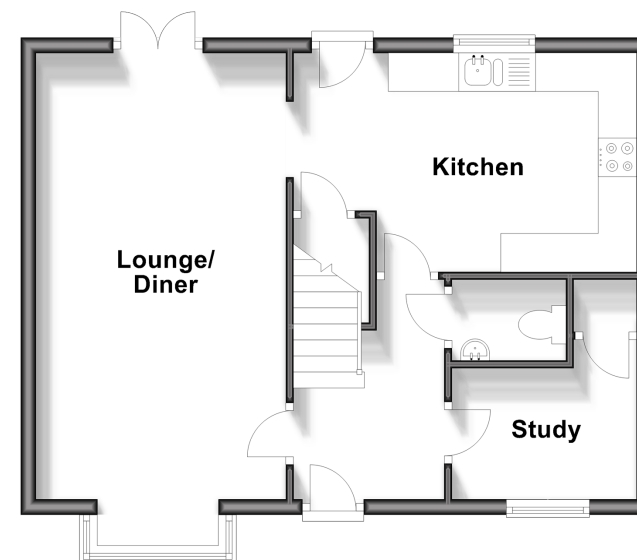
Landing  
 Bedroom 3 : 7'8 x 7'3 (2.34m x 2.21m)  
 Bedroom 2 : 11'1 x 10'5 (3.38m x 3.18m)  
 Bedroom 1 : 11'3 x 10'2 (3.43m x 3.10m)  
 En-Suite Shower Room  
 Bathroom: 7'7 x 6'2 (2.31m x 1.88m)

### OUTSIDE

Front Garden  
 Rear Garden

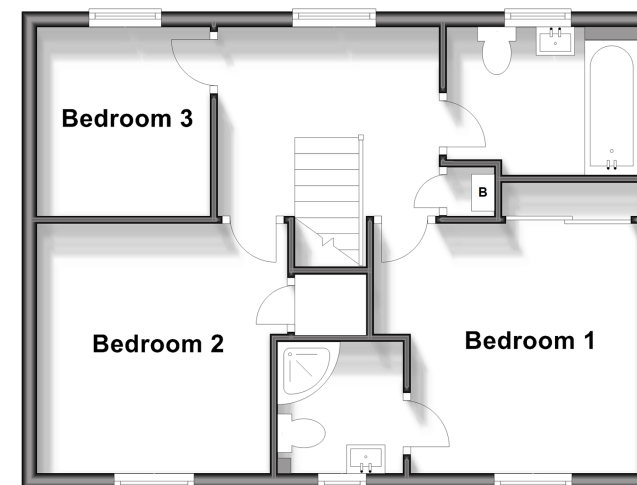
### Ground Floor

Approx. 45.8 sq. metres (493.4 sq. feet)



### First Floor

Approx. 45.4 sq. metres (488.3 sq. feet)



**Call Dover - 01304 214876 ■ [wardsofKent.co.uk](http://wardsofKent.co.uk)**

- Legal advice should be taken to verify fixtures/fittings, planning, alterations and/or lease details
- Appliances & services are untested, dimensions are approximate and floor plans are not to scale
- Through a Homewise Home For Life Plan people aged 60+ can secure this property for up to 59% less, by purchasing a Lifetime Lease.



18863381/20240202/OV/OV