



Guide Price
£325,000

Freehold

2x  1x  2x 

**Mill Fields,
Shepherdswell, Dover,
Kent, CT15**

OVER 60?

Secure this property
for up to **59% less!**

Wards
Helping you move forwards



Main features

- Positioned in a quiet cul-de-sac
- Sought after village location of Shepherdswell
- Surrounded by areas of rural Kent countryside
- No onward chain complications
- Off road parking and a garage meaning you have no more worries finding a space

Accommodation

GROUND FLOOR

Entrance Hallway

Kitchen: 14'1 x 9'2 (4.30m x 2.80m)

Lounge : 17'7 x 11'9 (5.36m x 3.58m)

Dining Area: 10'6 x 9'6 (3.20m x 2.90m)

Bedroom 3 / Study : 10'1 x 8'3 (3.08m x 2.52m)

Bedroom 1 : 14'6 x 11'9 (4.42m x 3.58m)

Walk-in Wardrobe : 9'4 x 4'9 (2.85m x 1.45m)

Bedroom 2 : 11'1 x 9'2 (3.38m x 2.80m)

Bathroom : 7'9 x 5'9 (2.36m x 1.75m)

OUTSIDE

Garage & Off Road Parking

Front Garden

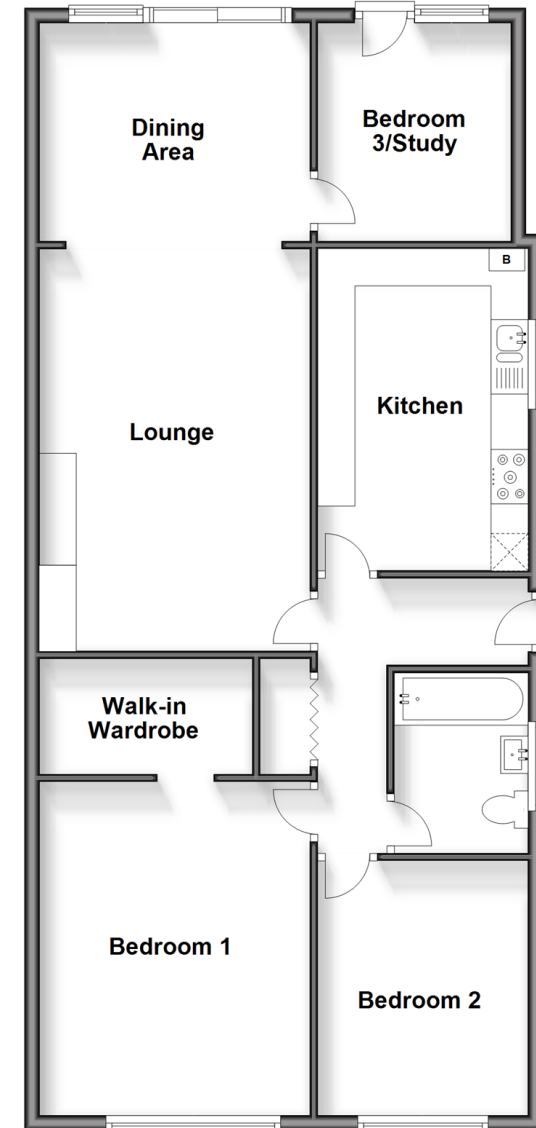
Rear Garden

Garden Shed

Call Dover - 01304 214876 ■ wardsof Kent.co.uk

- Legal advice should be taken to verify fixtures/fittings, planning, alterations and/or lease details
- Appliances & services are untested, dimensions are approximate and floor plans are not to scale
- Through a Homewise Home For Life Plan people aged 60+ can secure this property for up to 59% less, by purchasing a Lifetime Lease.

Ground Floor
Approx. 95.7 sq. metres (1030.2 sq. feet)



10735038/20241010/GH/OV